



UT-TECH

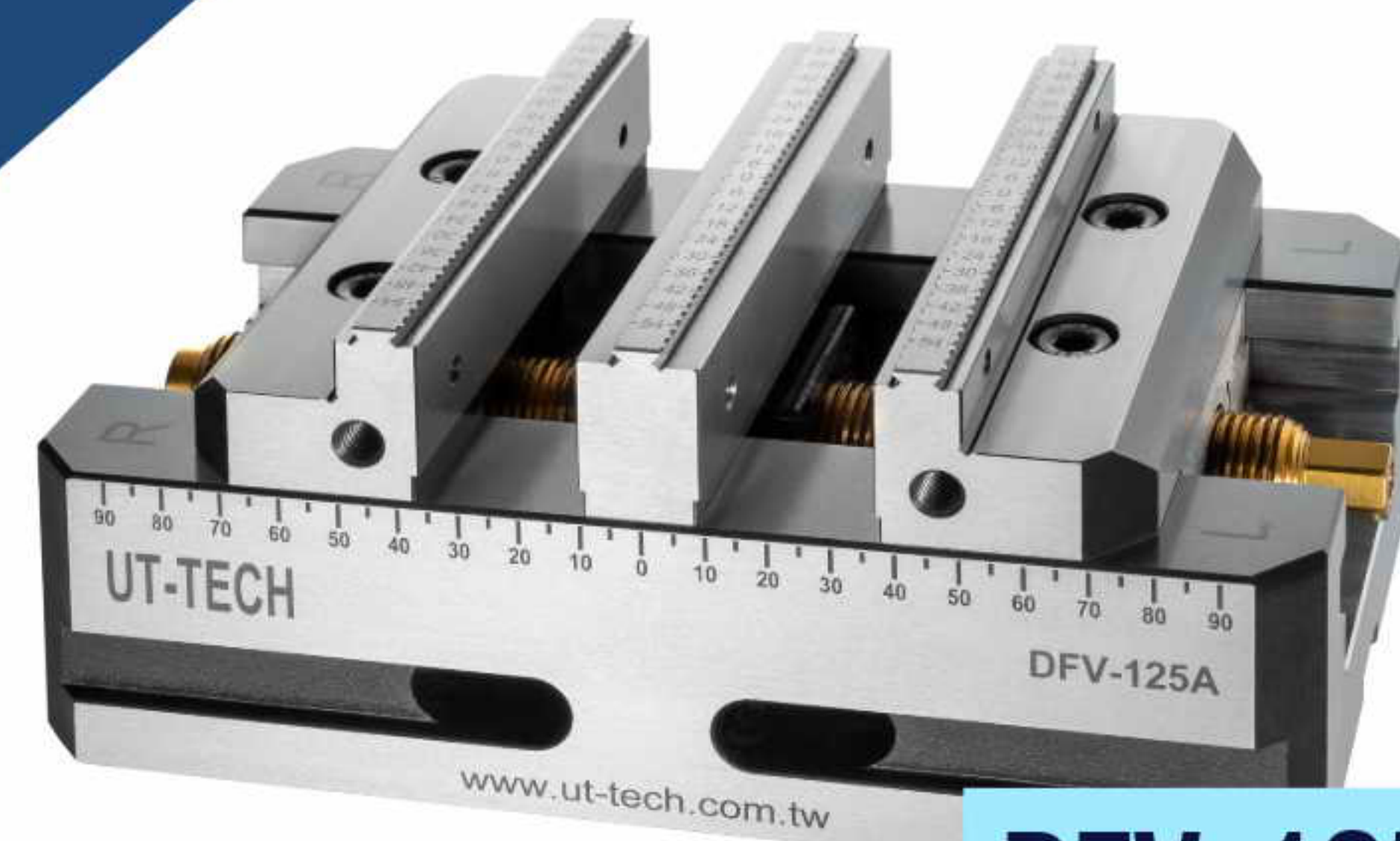
FAV-77



FAV-100



FAV-125



DFV-125



FAV-125-310L

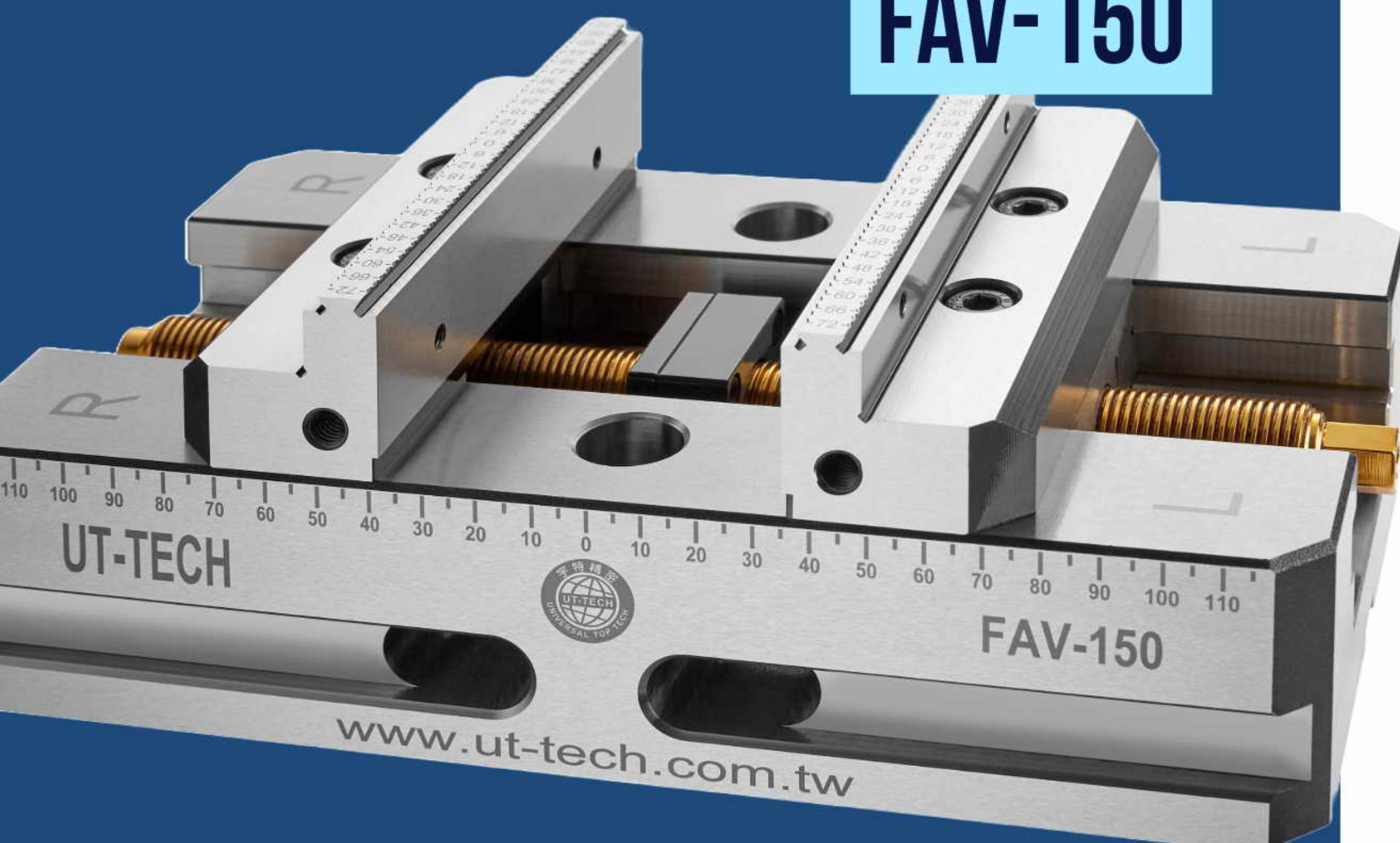


FAV-220/280

5-AXIS VISE

The main body and parts are made of high-grade alloy steel and undergo high-quality quenching and hardening heat treatment, providing high strength, wear resistance, and tensile strength characteristics. The vise is subjected to precision processing and grinding at each stage, ensuring high precision of the vise base and clamping surface.

FAV-150



The 5-AXIS VISE has high repeat positioning accuracy (up to 0.01mm). The screw rod undergoes quenching and high-frequency treatment, followed by high-precision titanium plating treatment, significantly improving the strength and wear resistance of the screw rod. It can be used with Zero Point System.

**PATENT
PENDING**

www.ut-tech.com.tw



UT-TECH

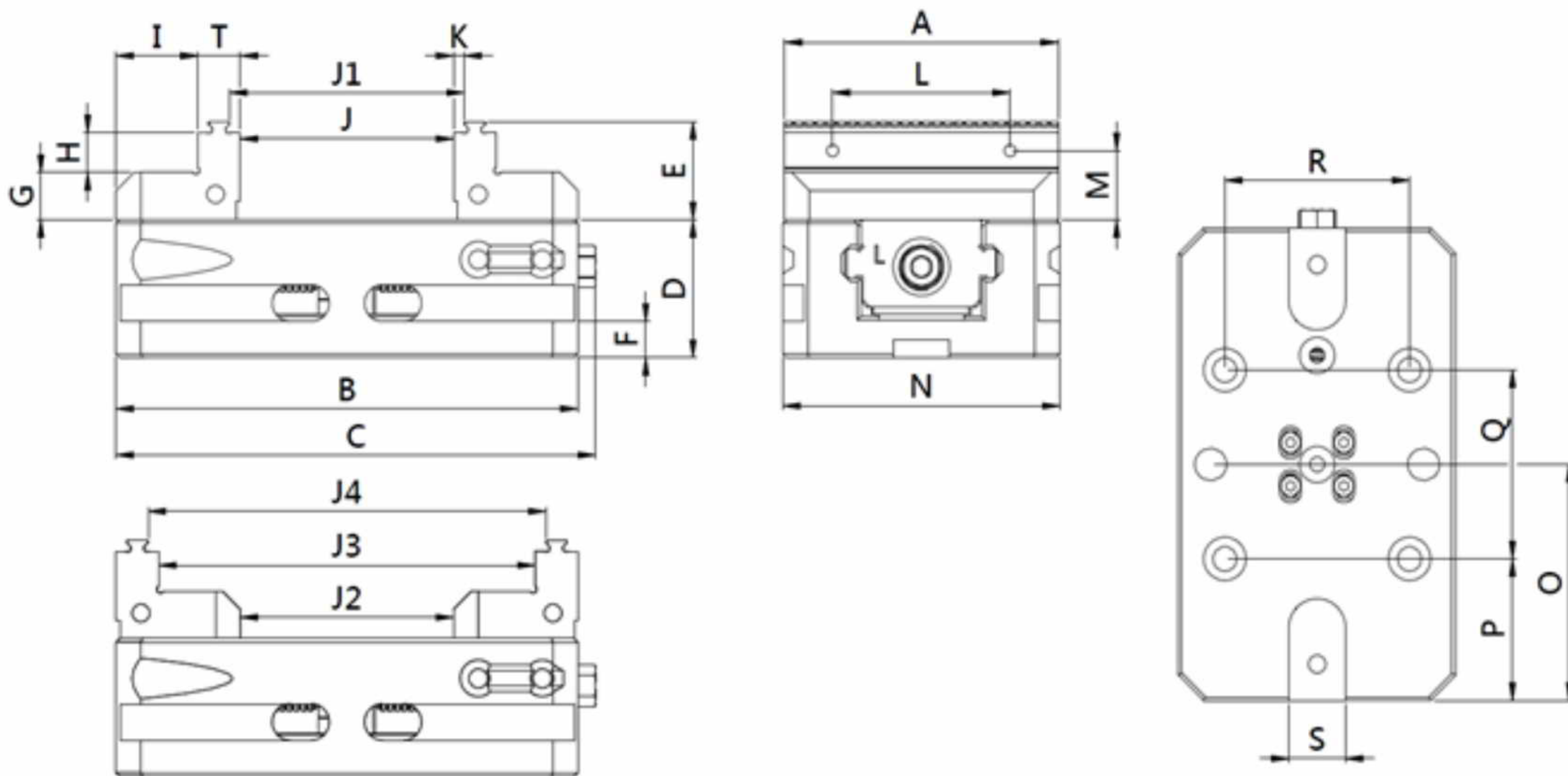
www.ut-tech.com.tw



Can be installed with pull bolts and used in conjunction with Zero Point System QPB-52A and QPB-52B.



5-AXIS VISE FAV-77



MODEL	A	B	C	D	E	F
FAV-77	77	130	135	38	27	10
G	H	I	T	K	L	M
13	11	23	12	3	135	19
N	O	P	Q	R	S	J
78	65	39	52	52	16	60
J1	J2	J3	J4	Clamping Force	Cross Weight	
66	60	106	112	1100kgf	4kgs	



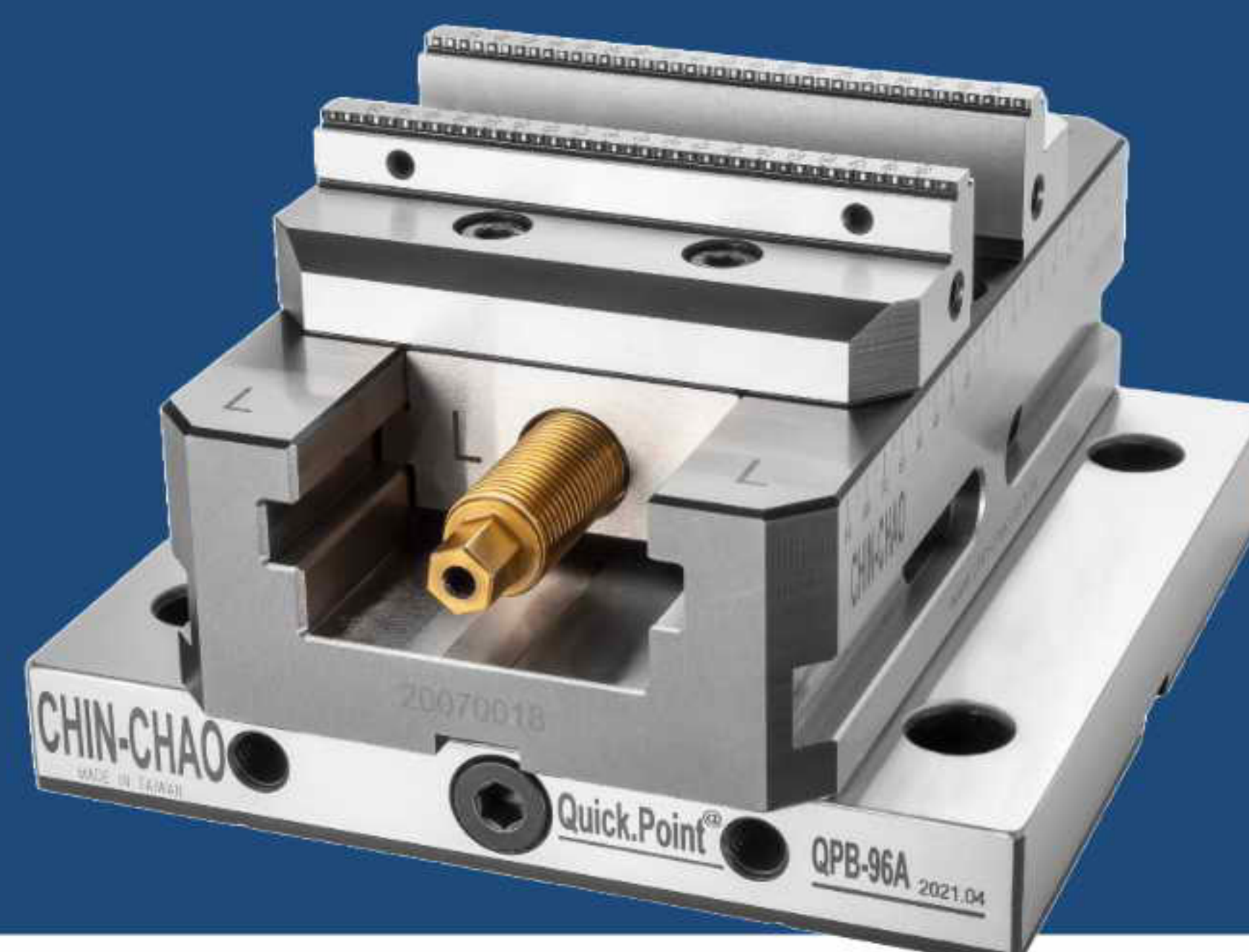
► **Optional Accessories :**
Pull Bolts x 4 PCS /
Zero Point System

► **Standard Accessories :** Ratchet handle x 1 PCS/ Guide key x 2 PCS/M6 x 12L Screw x 2 PCS /Lock Block x 4 PCS



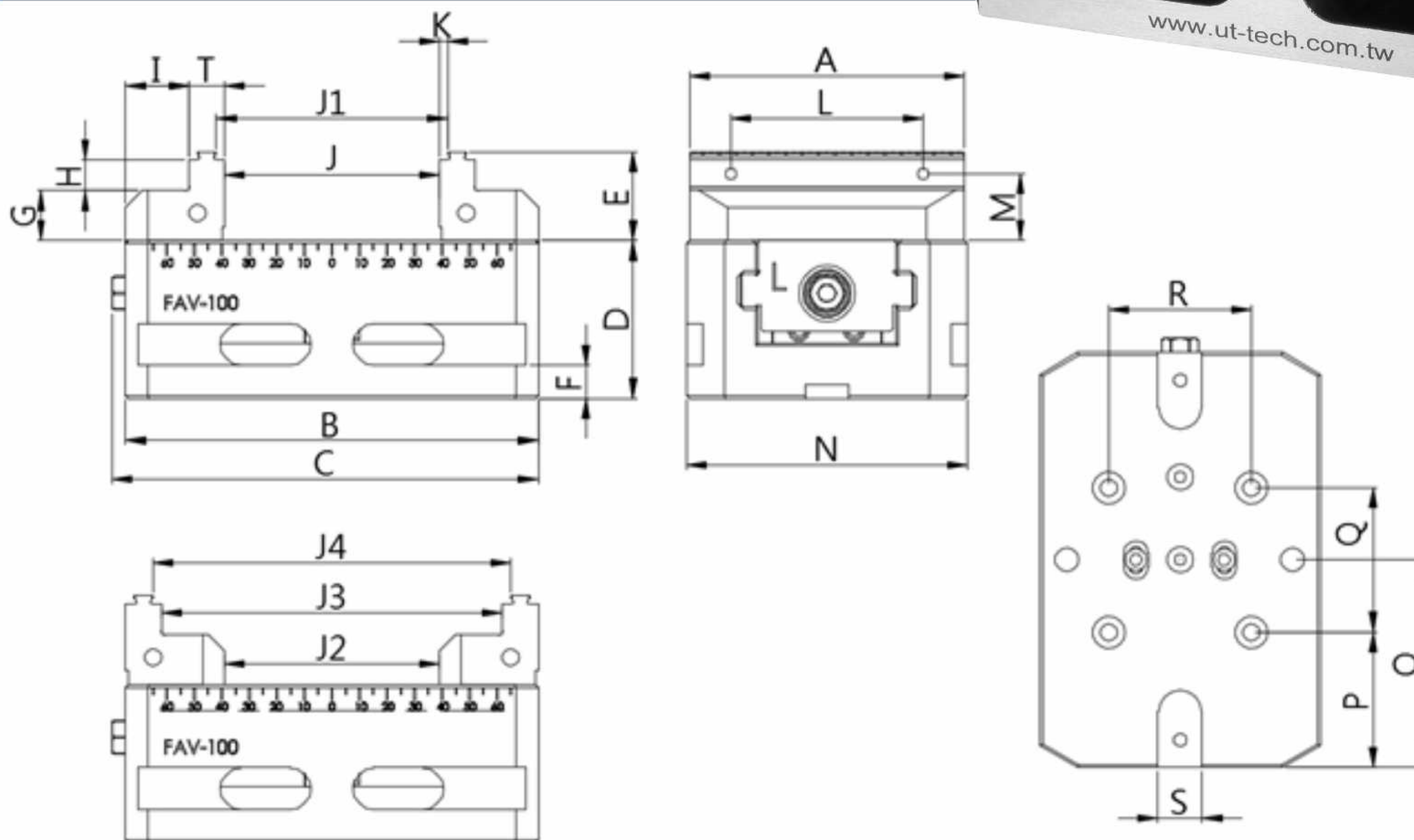
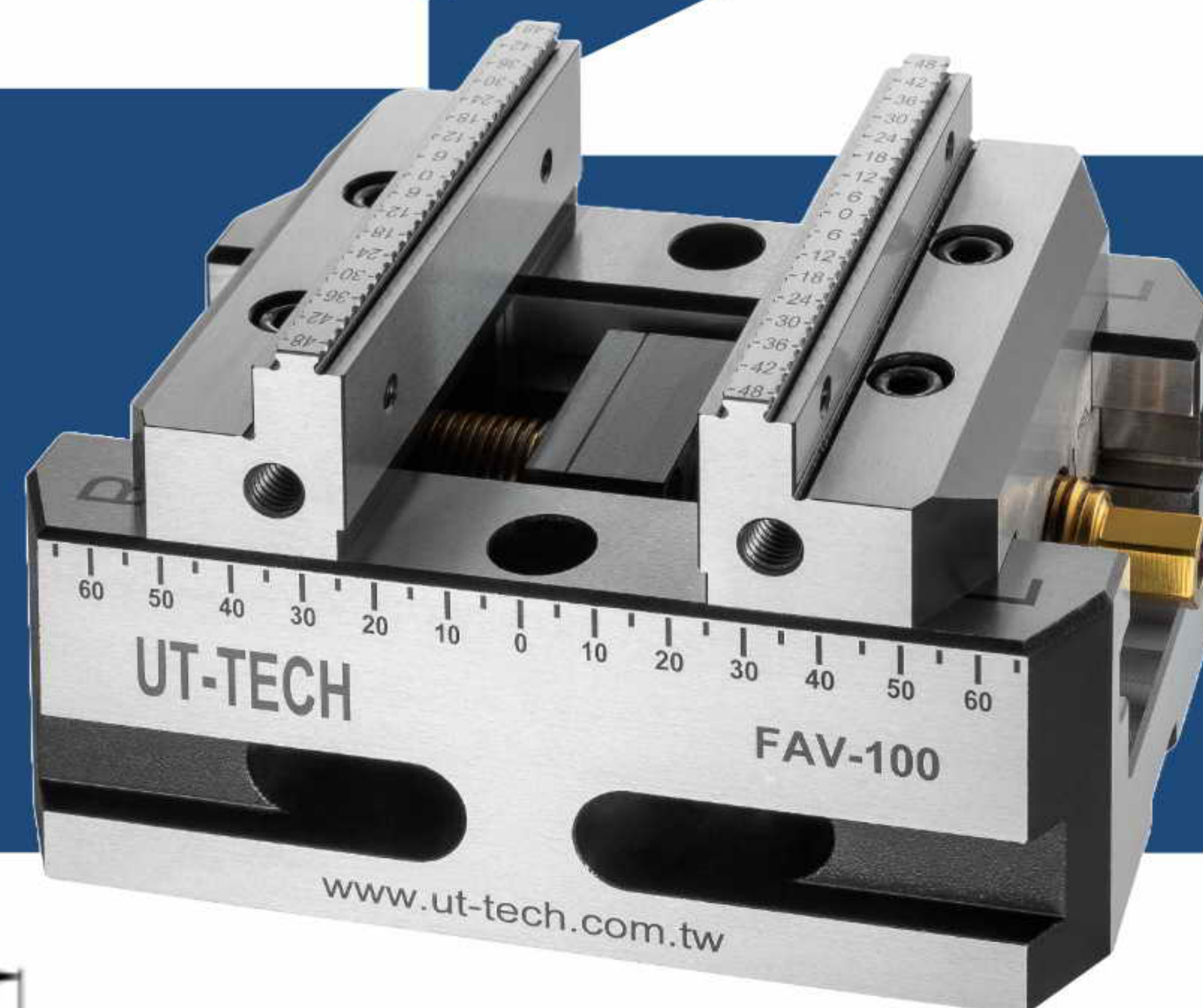
UT-TECH

www.ut-tech.com.tw



Can be installed with pull bolts and used in conjunction with Zero Point System QPB-52A and QPB-52B.

5-AXIS VISE FAV-100



MODEL	A	B	C	D	E	F
FAV-100	100	150	155	57	32	12
G	H	I	T	K	L	M
18	11	23	13	3	70	24
N	O	P	Q	R	S	J
102	75	49	52	52	16	78
J1	J2	J3	J4	Clamping Force	Cross Weight	
84	78	124	130	1300kgf	5.8kgs	

► **Optional Accessories :**
Pull Bolts x 4 PCS /
Zero Point System

► **Standard Accessories :** Ratchet handle x 1 PCS/ Guide key x 2 PCS/M6 x 12L Screw x 2 PCS /Lock Block x 4 PCS





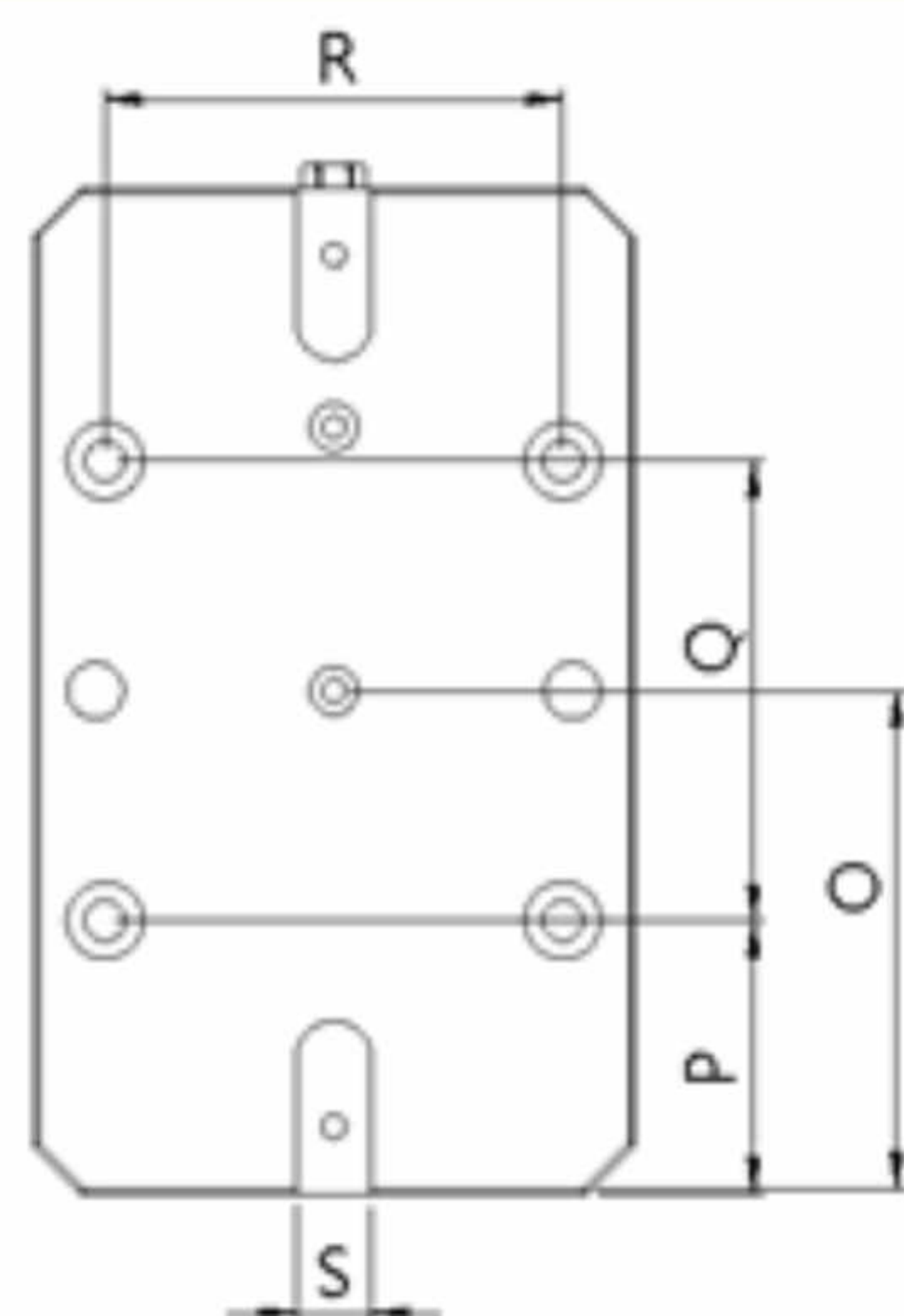
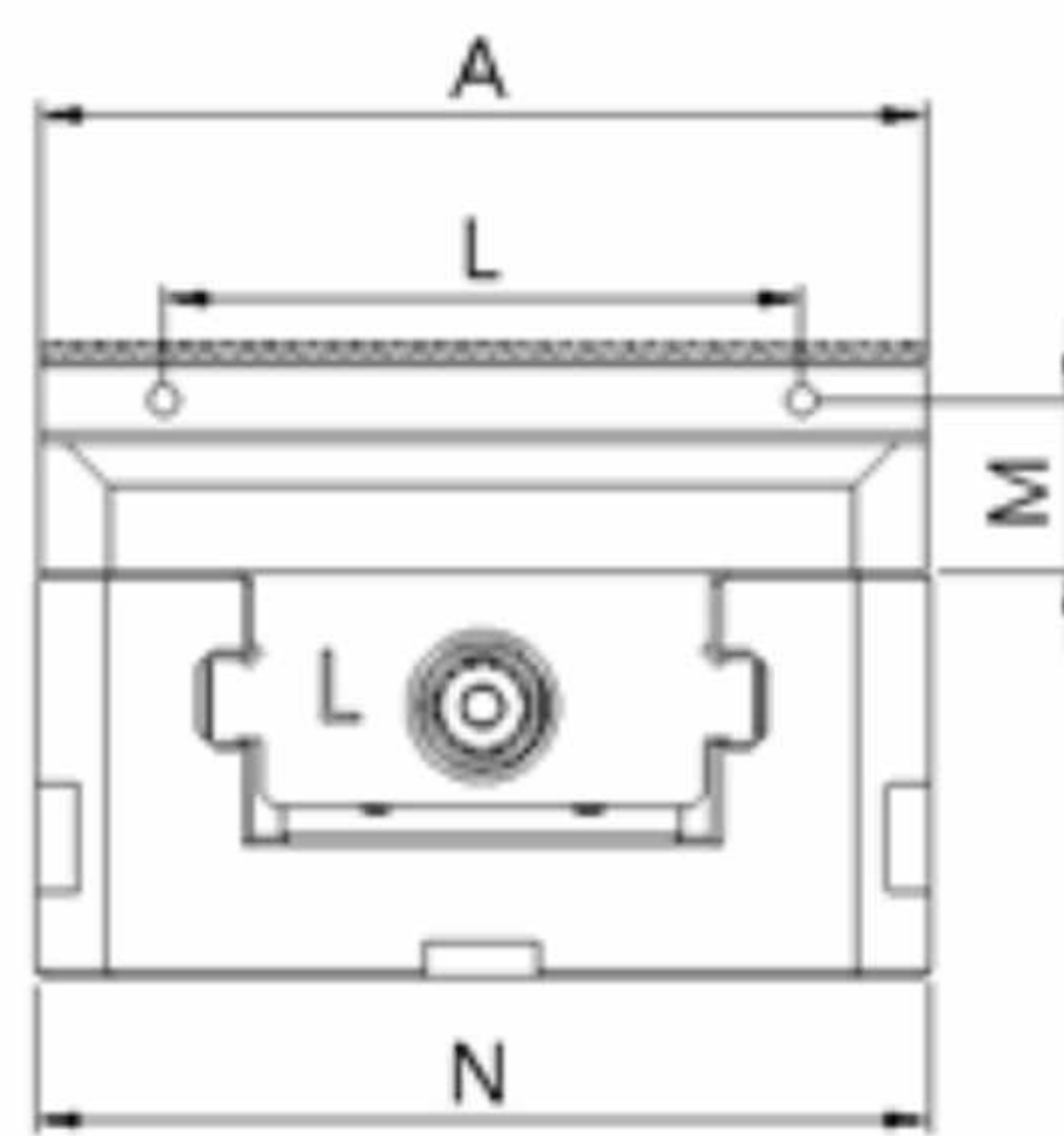
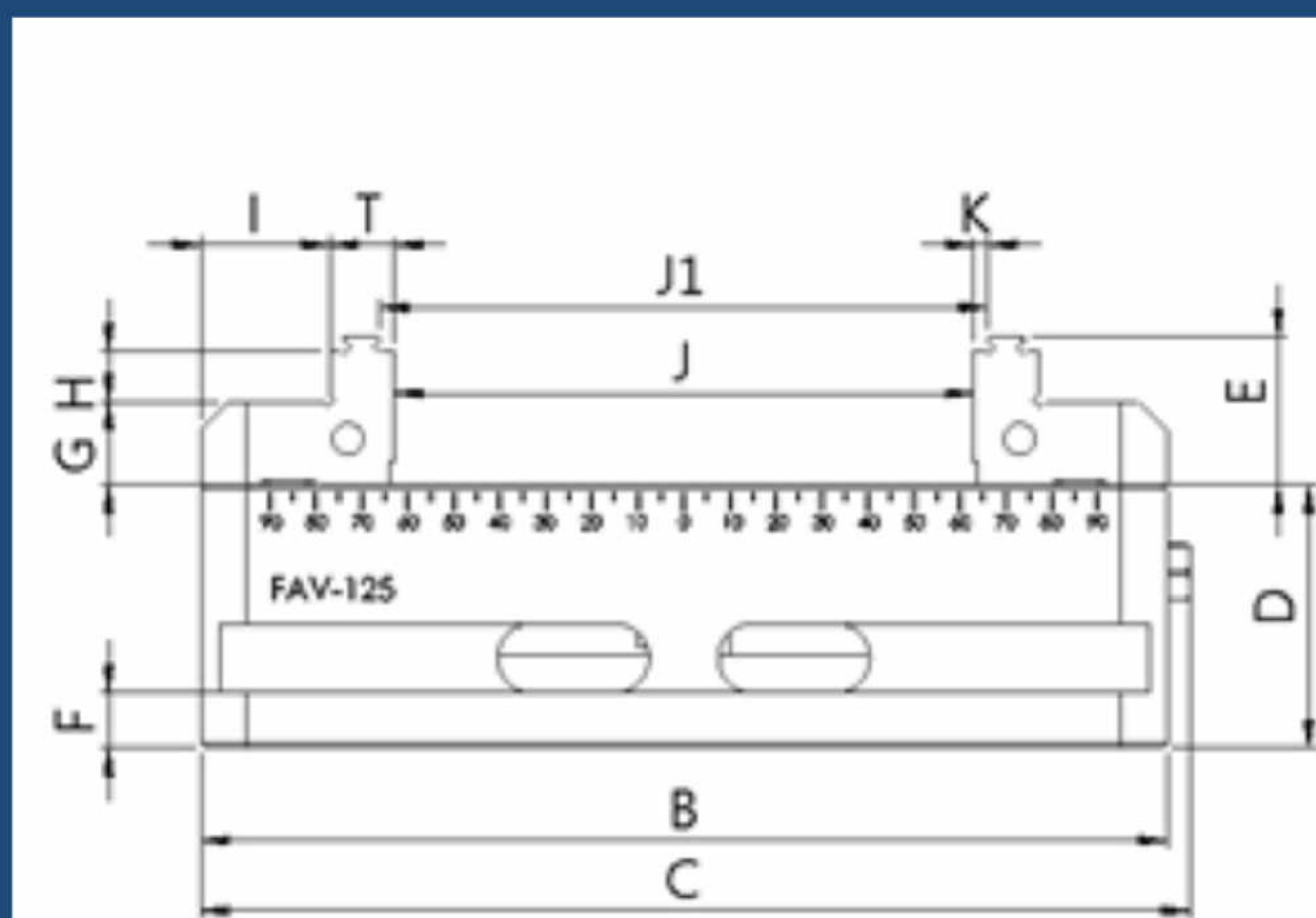
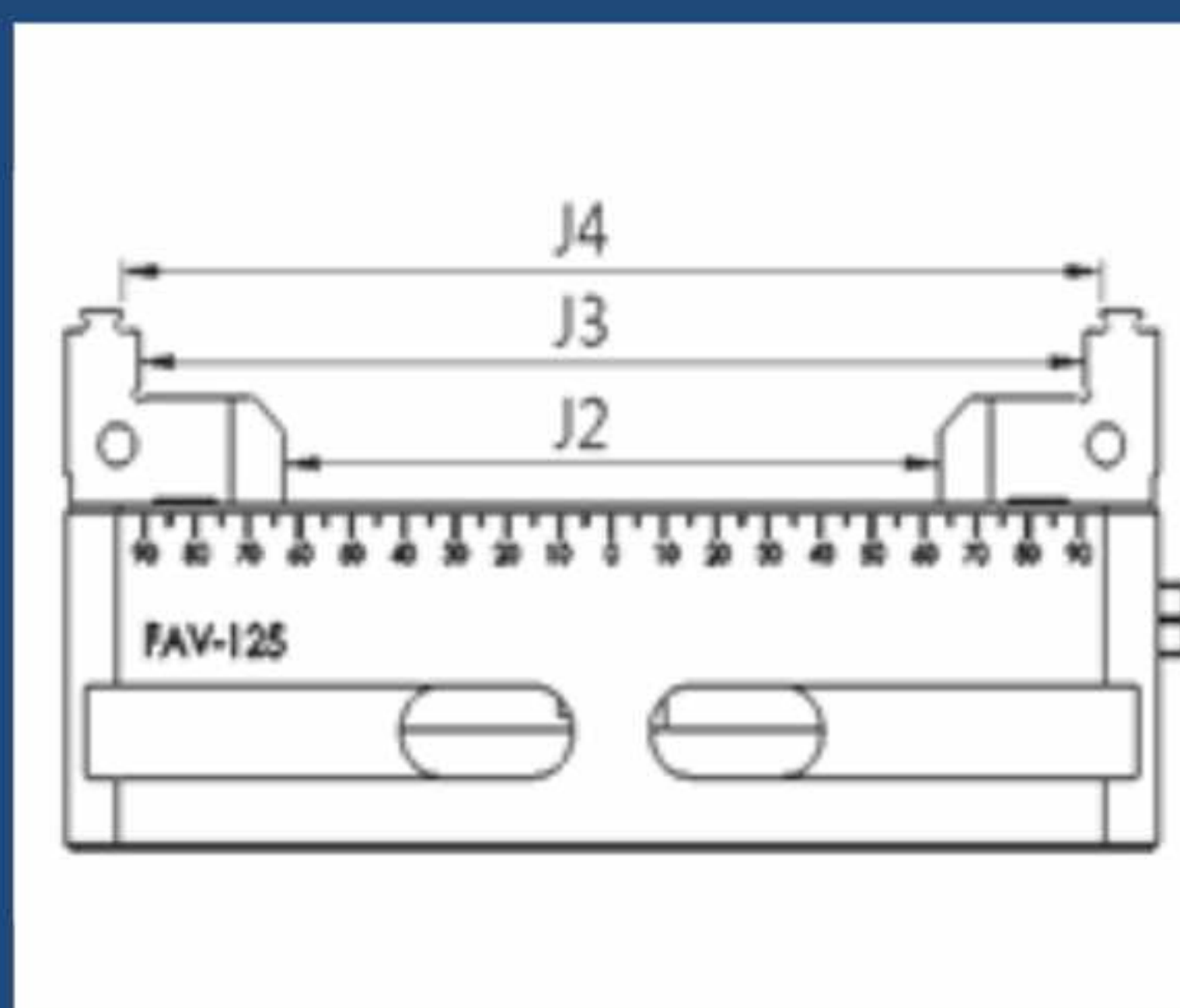
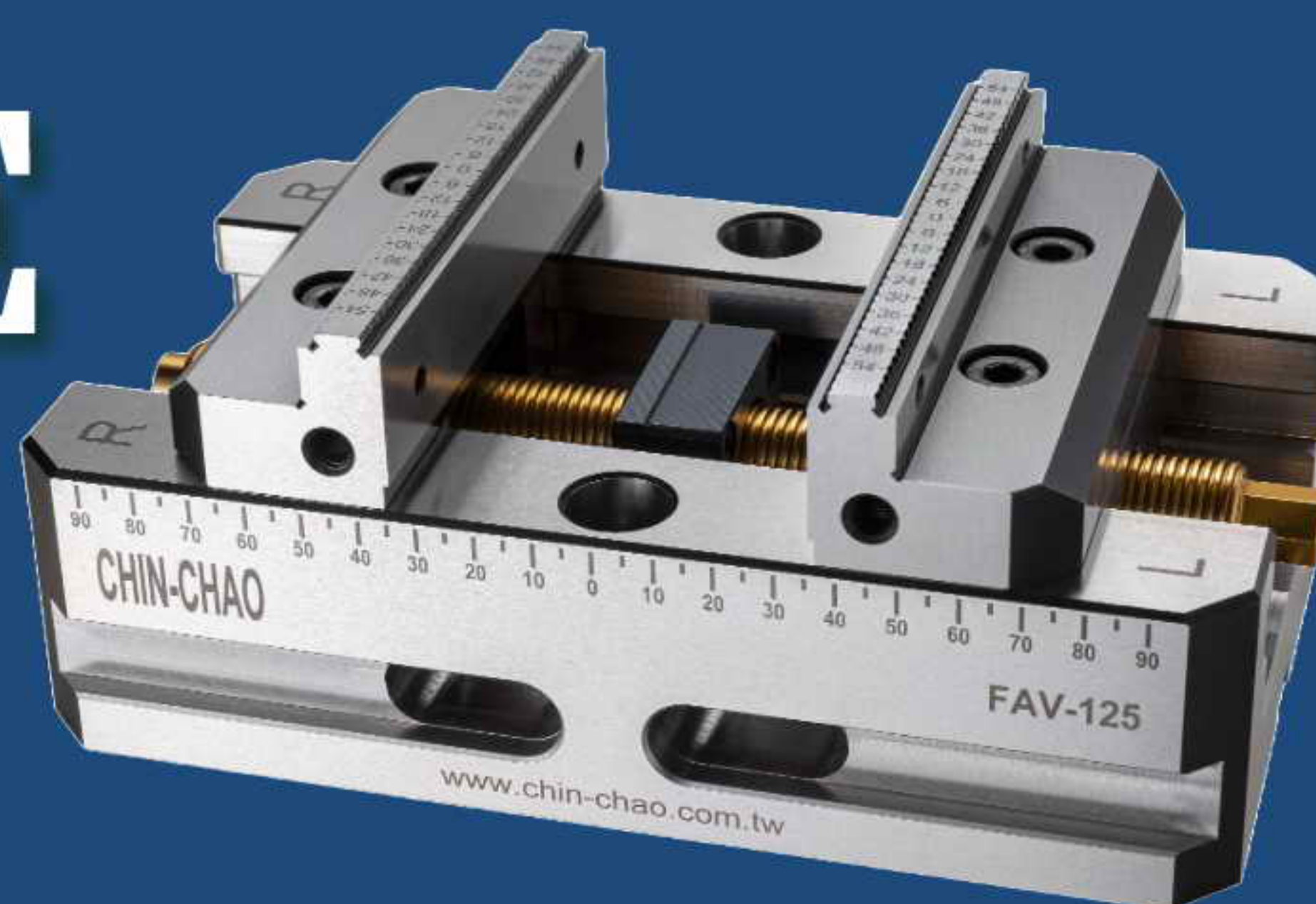
UT-TECH

www.ut-tech.com.tw



Can be installed with pull bolts and used in conjunction with Zero Point System QPB-96A and QPB-96B.

5-AXIS VISE FAV-125



MODEL	A	B	C	D	E	F
FAV-125	125	210	215	57	32	12
G	H	I	T	K	L	M
18	11	28	14	3	90	24
N	O	P	Q	R	S	J
126	104	57	96	96	16	126
J1	J2	J3	J4	Clamping Force	Cross Weight	
132	126	182	188	1,500kgf	11kgs	

► **Optional Accessories :**
Pull Bolts x 4 PCS /
Zero Point System

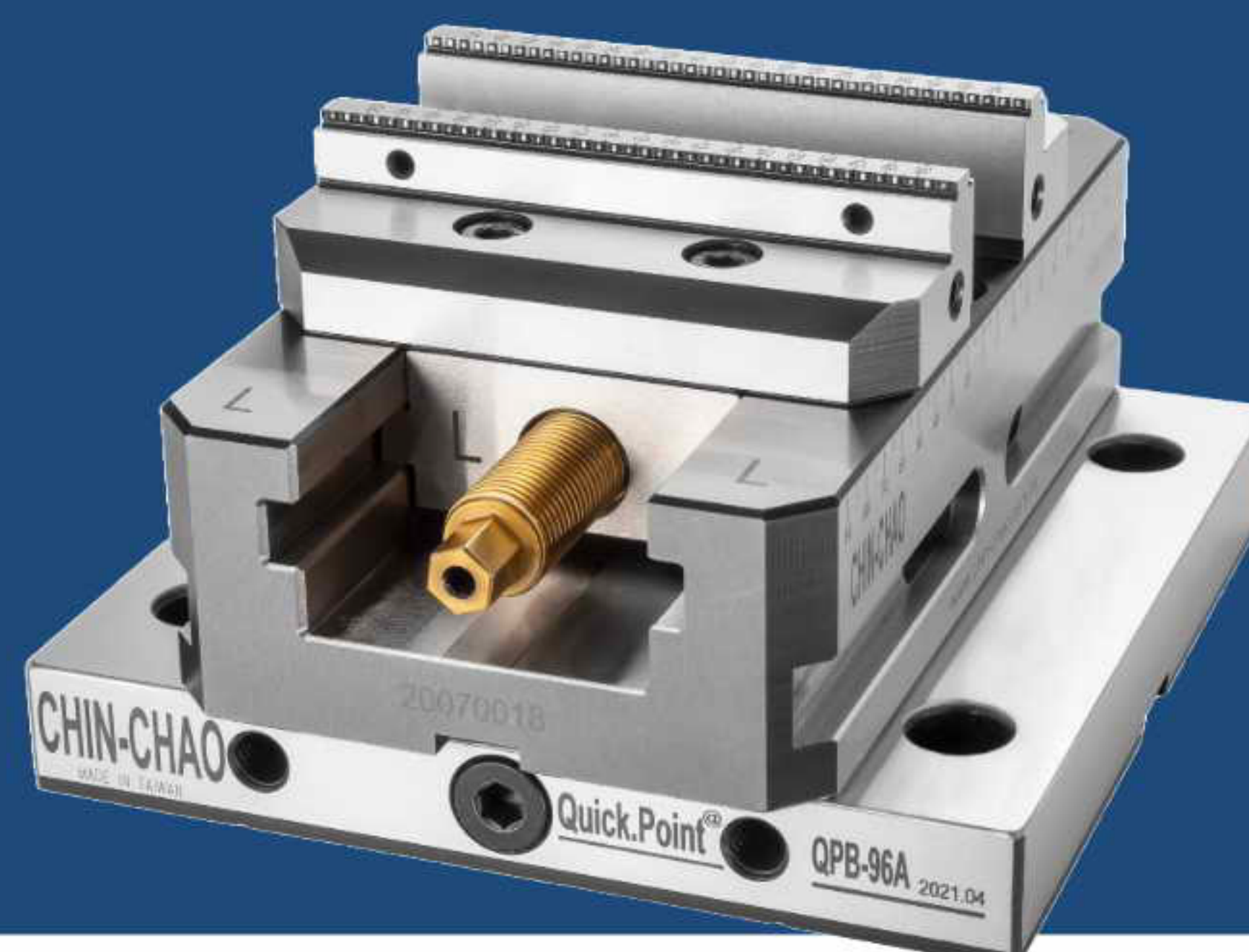
► **Standard Accessories :** Ratchet handle x 1 PCS / Guide key x 2 PCS / M6 x 12L Screw x 2 PCS / Lock Block x 4 PCS





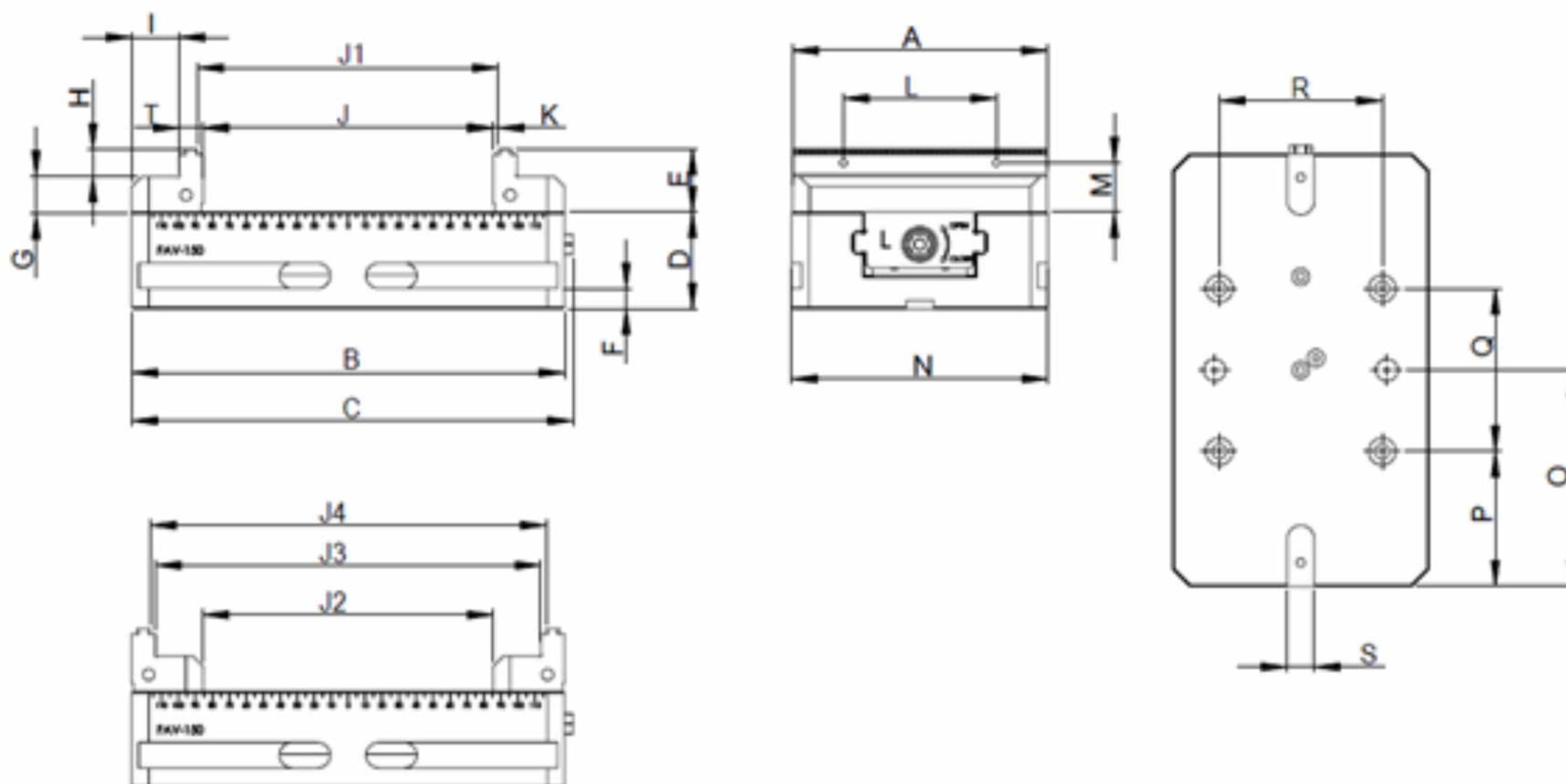
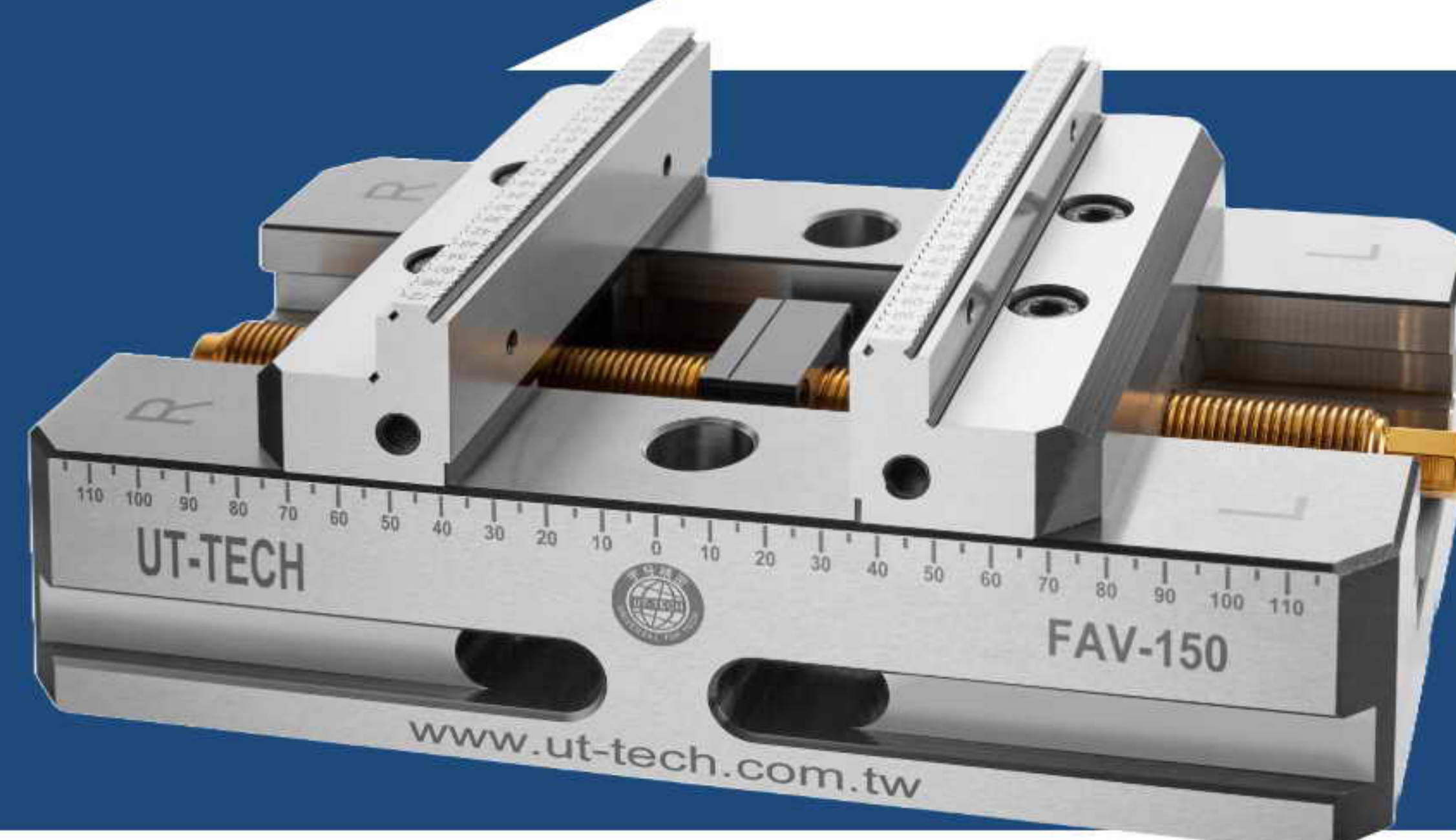
UT-TECH

www.ut-tech.com.tw



Can be installed with pull bolts and used in conjunction with Zero Point System QPB-96A and QPB-96B.

5-AXIS VISE FAV-150



MODEL	A	B	C	D	E	F
FAV-150	150	255	260	57	37	12
G	H	I	T	K	L	M
21	16	28	14	3	90	29
N	O	P	Q	R	S	J
151	127.5	79.5	96	96	16	171
J1	J2	J3	J4	Clamping Force	Cross Weight	
177	171	227	233	1,600kgf	15kgs	

► **Optional Accessories :**
Pull Bolts x 4 PCS /
Zero Point System

► **Standard Accessories :** Ratchet handle x 1 PCS/ Guide key x 2 PCS/M6 x 12L Screw x 2 PCS /Lock Block x 4 PCS



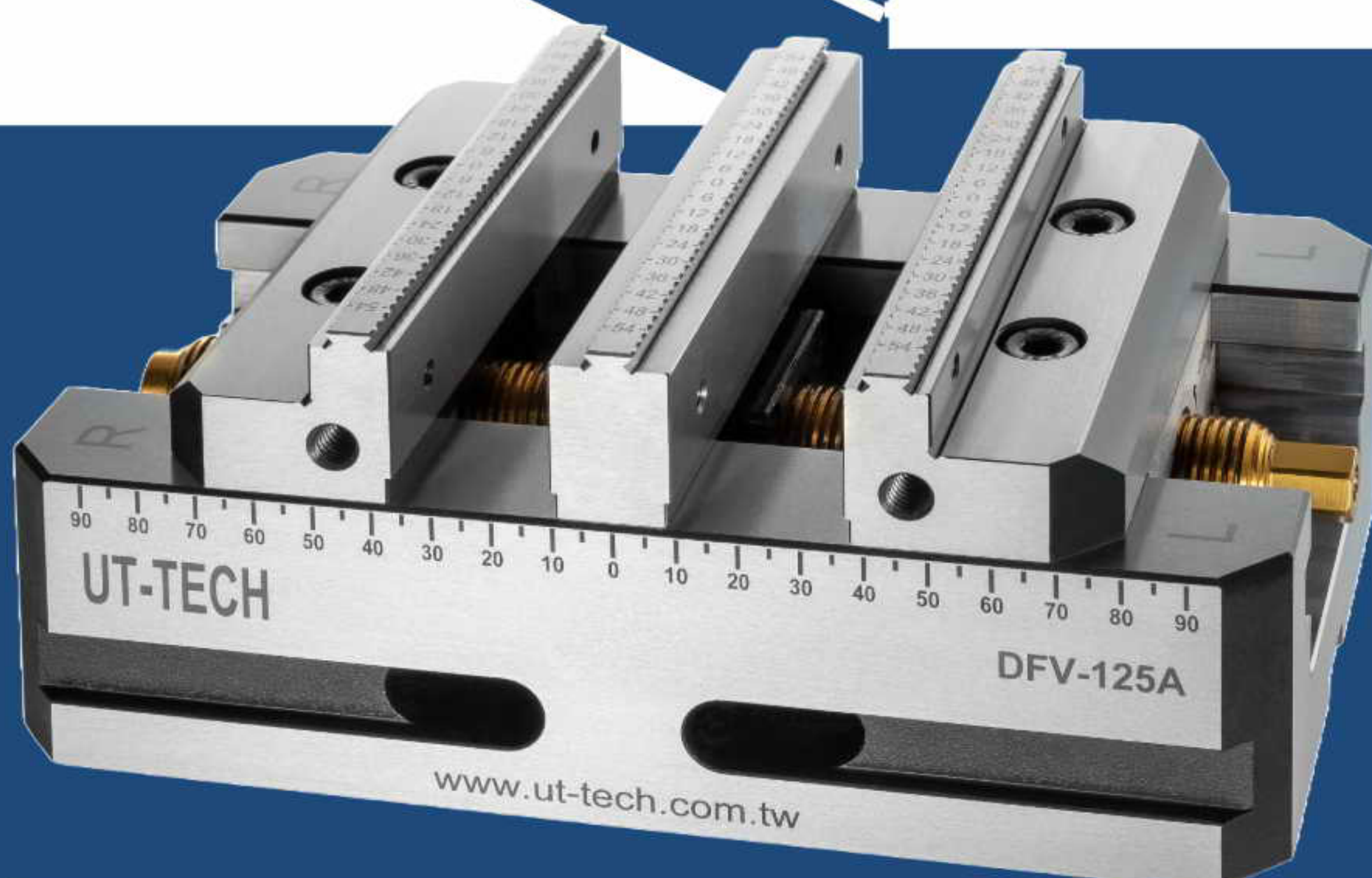


UT-TECH

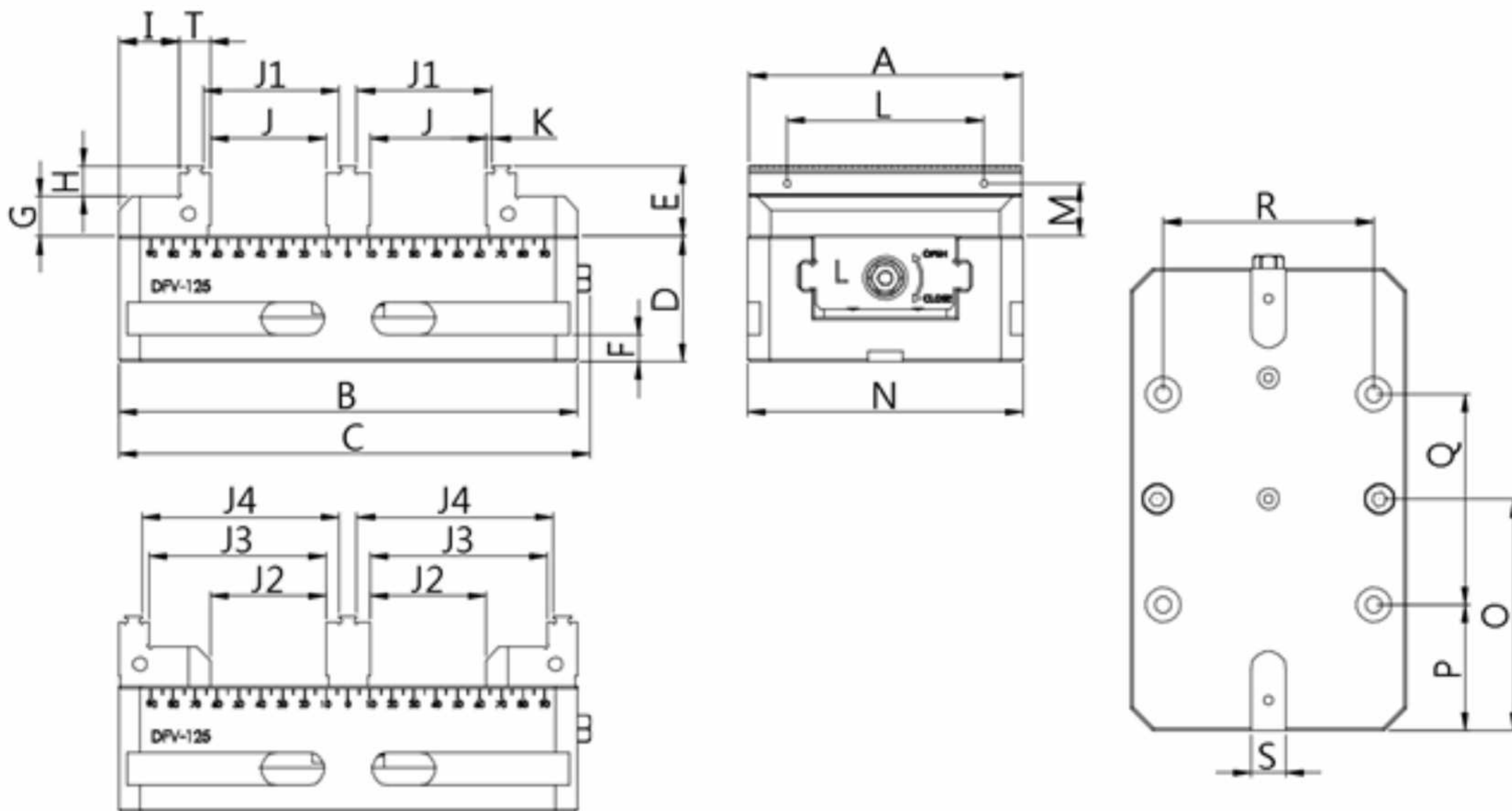
www.ut-tech.com.tw



Can be installed with pull bolts and used in conjunction with Zero Point System QPB-96A and QPB-96B.



5-AXIS VISE- DOUBLE LOCK DFV-125



MODEL	A	B	C	D	E	F
DFV-125	125	210	215.5	57	32	12
G	H	I	T	K	L	M
18	14	28	14	3	90	24
N	O	P	Q	R	S	J
126	105	57	96	96	16	53
J1	J2	J3	J4	Clamping Force	Clamping Force	
62	53	81	90	1800kgf	10.6kgs	

► **Optional Accessories :**
Pull Bolts x 4 PCS/
Zero Point System

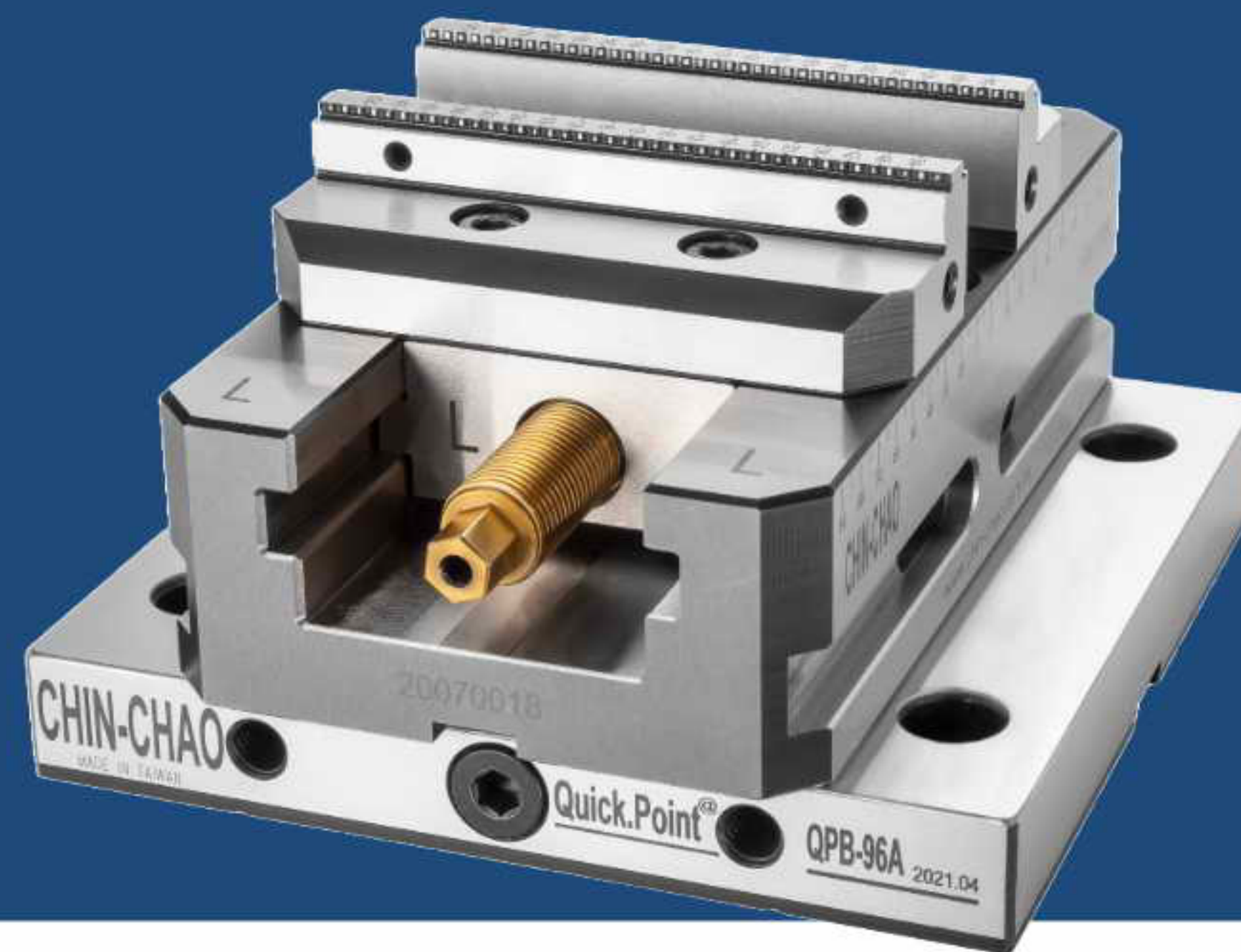
► **Standard Accessories :** Ratchet handle x 1 PCS/ Guide key x 2 PCS/M6 x 12L Screw x 2 PCS/ Lock Block x 4 PCS





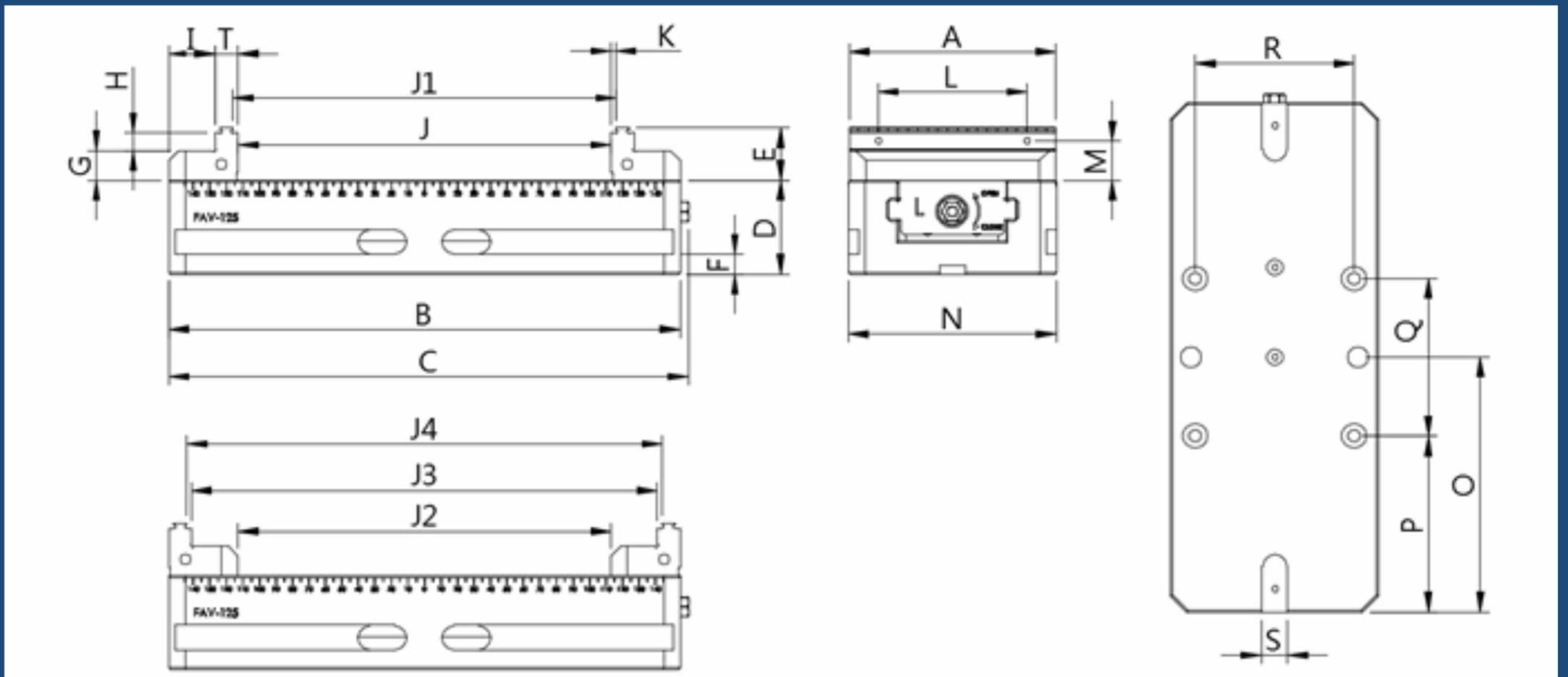
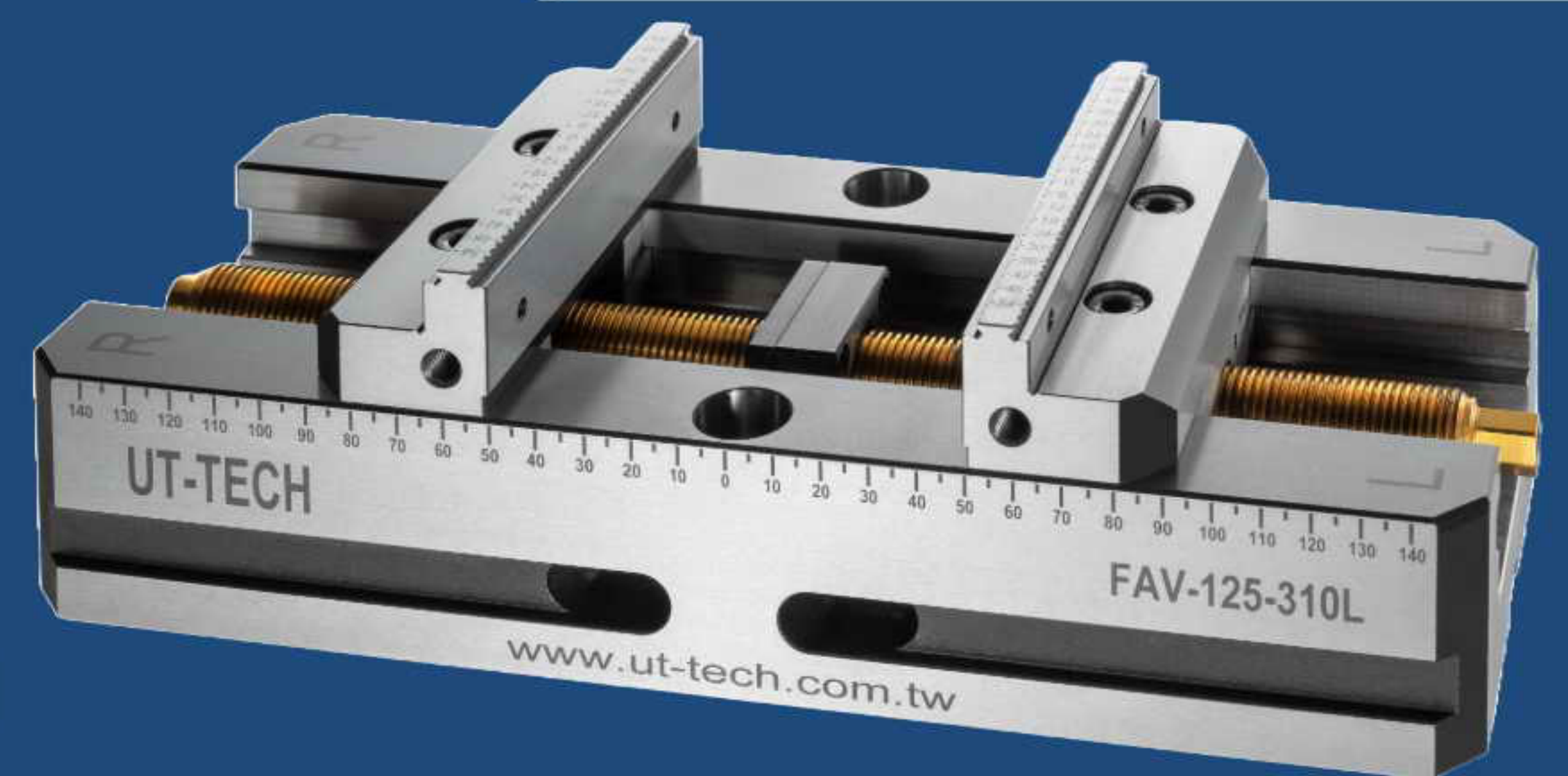
UT-TECH

www.ut-tech.com.tw



Can be installed with pull bolts and used in conjunction with Zero Point System QPB-96A and QPB-96B.

5-AXIS VISE FAV-125-310L



MODEL	A	B	C	D	E	F
FAV-125-310L	125	310	315	57	32	12
G	H	I	T	K	L	M
18	11	28	14	3	90	24
N	O	P	Q	R	S	J
126	155	107	96	96	16	226
J1	J2	J3	J4	Clamping Force	Clamping Force	
232	226	282	288	1800kgf	13.5kgs	

► **Optional Accessories :**
Pull Bolts x 4 PCS /
Zero Point System

► **Standard Accessories :** Ratchet handle x 1 PCS/ Guide key x 2 PCS/M6 x 12L Screw x 2 PCS /Lock Block x 4 PCS





UT-TECH

www.ut-tech.com.tw

Features

- ▶ 5-Axis Vise (Self-Centering Vise), with high repeat positioning accuracy (up to 0.01mm) which suitable for precision machining applications in precision 4 and 5-Axis CNC machine tools, rotary tables, or precision vertical/horizontal integrated milling and cutting machining centers.
- ▶ The main body and parts are made of high-grade alloy steel and undergo high-quality quenching and hardening heat treatment, providing high strength, wear resistance, and tensile strength characteristics. The vise is subjected to precision processing and grinding at each stage, ensuring high precision of the vise base and clamping surface.
- ▶ The screw rod undergoes quenching and high-frequency treatment, followed by high-precision titanium plating treatment, significantly improving the strength and wear resistance of the screw rod.
- ▶ The hardness of the jaw plate with heat treatment is HRC45° ~48° , capable of clamping high-hardness materials. The serrations on the jaw plate with 45° angle structure strengthen the clamping force.
- ▶ The sliding block is designed with additional hole positions, allowing for quick replacement or addition of required jaw plates, to meet various clamping requirements for different workpieces and make the workpiece clamping more diverse and flexible.
- ▶ This machine vise offers five different clamping modes (J~J4) for various machining methods and workpiece sizes, providing flexible clamping options.
- ▶ The vise can be used with lock blocks and guide keys to mount on a connecting plate, or fixed directly on the worktable surface. As well as use with zero point system is available.
- ▶ The height of the vise body has fixed specifications (D), allowing for simultaneous use of multiple units.
- ▶ The unique design of the machine vise has a patent pending.





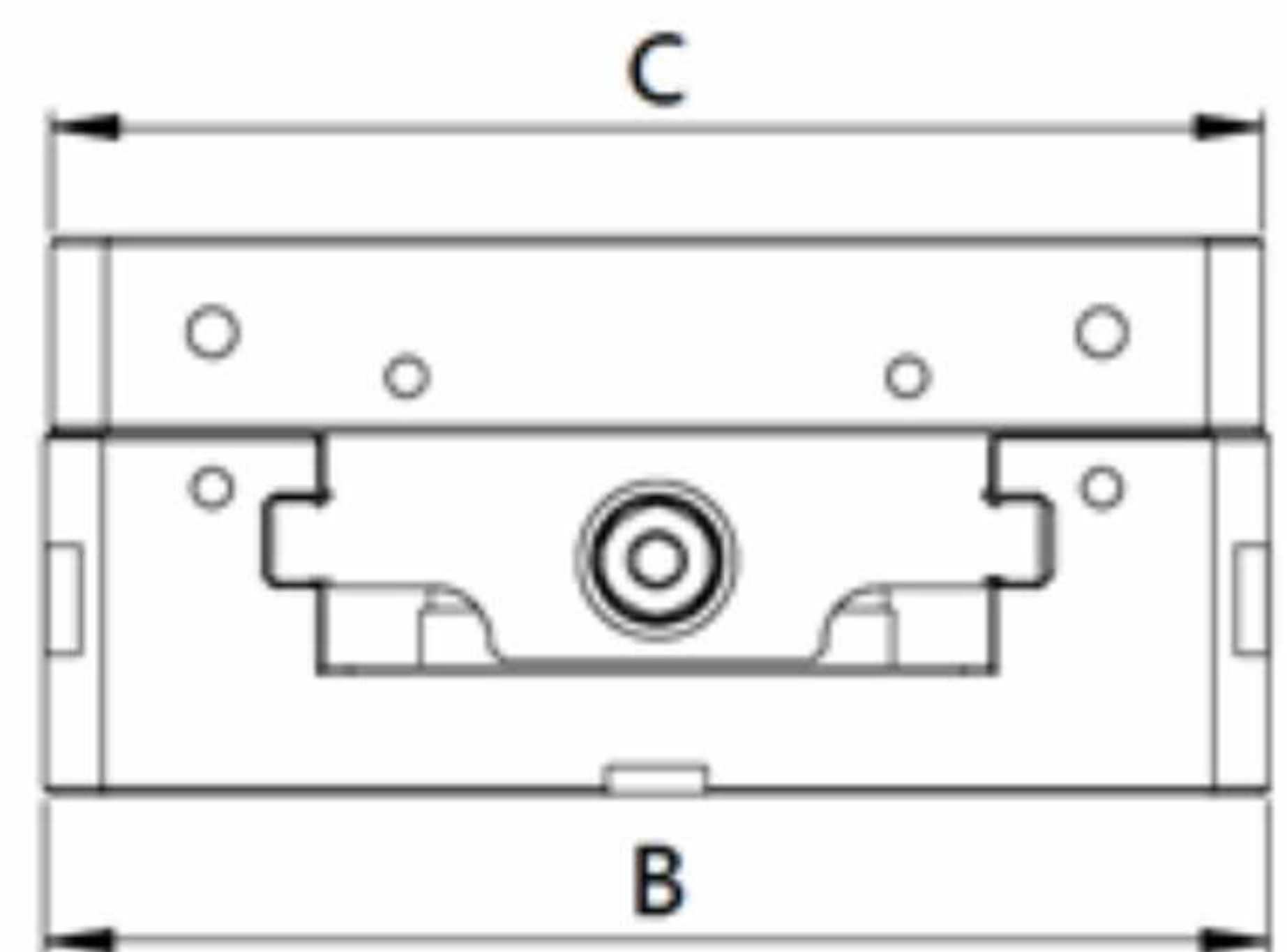
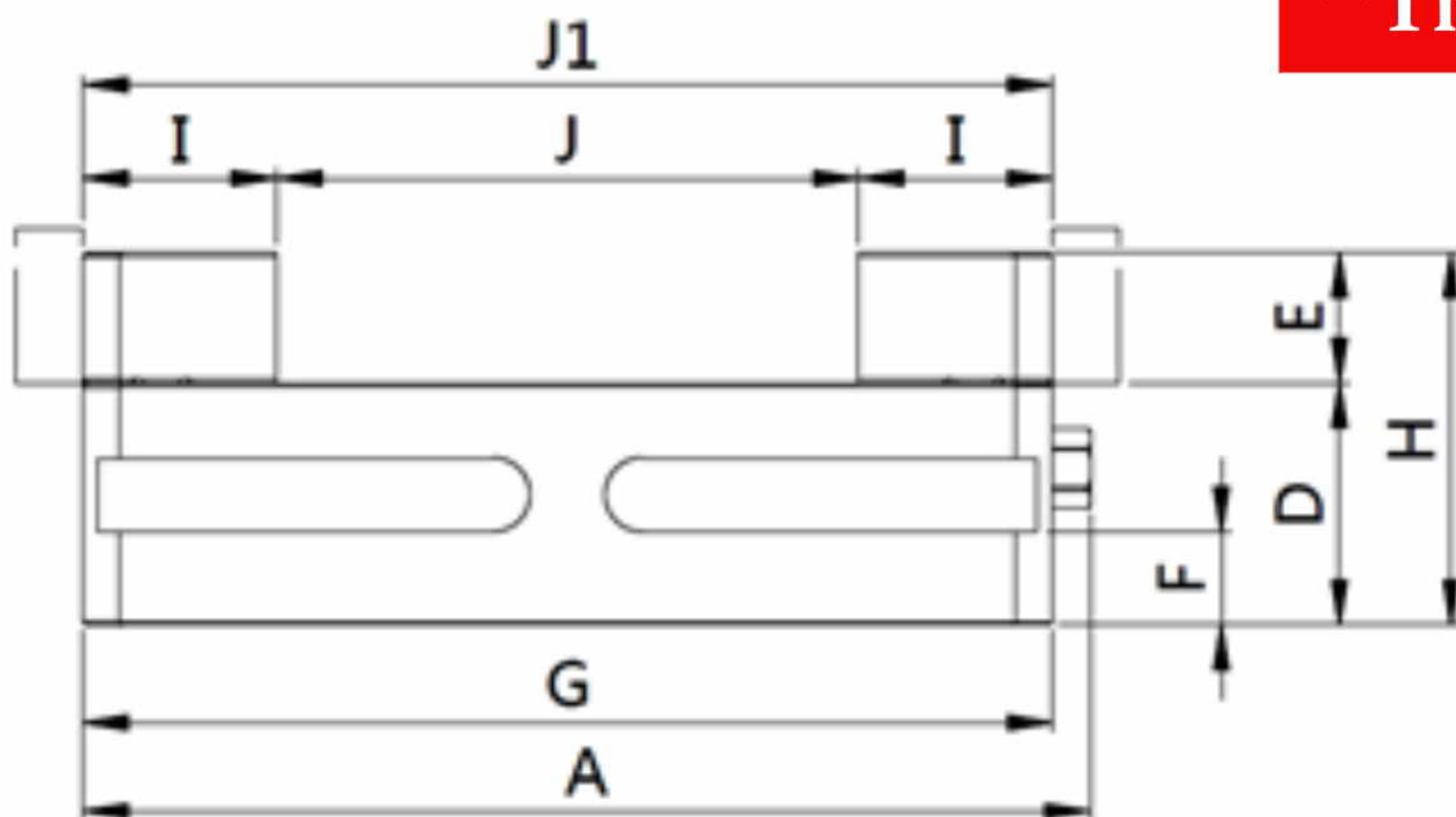
UT-TECH

www.ut-tech.com.tw

BIG OPEN 5-AXIS VISE FAV-220/280



****The jaw plates can be customized.**



MODEL	A	B	C	D	E	F
FAV-220	270	220	218	65	35	25
G	H	I	J	J1	Clamping Force	Clamping Force
260	100	52	156	260	2,000kgf	32kgs

MODEL	A	B	C	D	E	F
FAV-280	290	280	278	80	40	25
G	H	I	J	J1	Clamping Force	Clamping Force
280	120	62	156	280	2,500kgf	50kgs

► **Optional Accessories :** Pull Bolts x 4 PCS / Zero Point System

► **Standard Accessories :** Ratchet handle x 1 PCS / Guide key x 2 PCS / M6 x 12L Screw x 2 PCS / Lock Block x 4 PCS





UT-TECH

www.ut-tech.com.tw

Features

- ▶ 5-Axis Vise (Self-Centering Vise), with high repeat positioning accuracy (up to 0.015mm) which suitable for precision machining applications in precision 4 and 5-Axis CNC machine tools, rotary tables, or precision vertical/horizontal integrated milling and cutting machining centers.
- ▶ Large opening design, capable of clamping larger workpieces (requires larger work surfaces).
- ▶ The main body and parts are made of high-grade alloy steel and undergo high-quality quenching and hardening heat treatment, providing high strength, wear resistance, and tensile strength characteristics. The vise is subjected to precision processing and grinding at each stage, ensuring high precision of the vise base and clamping surface.
- ▶ The screw rod undergoes quenching and high-frequency treatment, followed by high-precision titanium plating treatment, significantly improving the strength and wear resistance of the screw rod.
- ▶ The hardness of the jaw plate with heat treatment is HRC45° , capable of clamping high hardness materials below HRC40° .
- ▶ The sliding block is designed with additional hole positions, allowing for quick replacement or addition of required jaw plates, to meet various clamping requirements for different workpieces and make the workpiece clamping more diverse and flexible.
- ▶ This machine vise offers two different clamping modes (J~J1) for various machining methods and workpiece sizes, providing flexible clamping options.
- ▶ The vise can be used with lock blocks and guide keys to mount on a connecting plate, or fixed directly on the worktable surface, to save procurement costs.
- ▶ The height of the vise body has fixed specifications (D), allowing for simultaneous use of multiple units.
- ▶ The unique design of the machine vise has a patent pending.



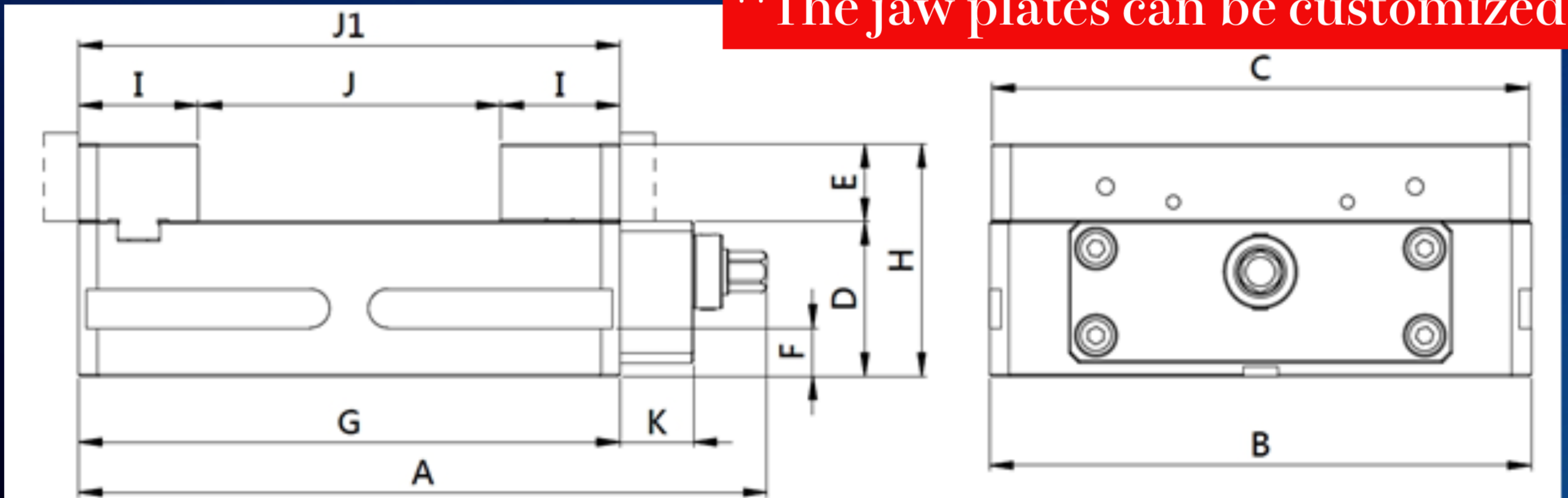


宇特精密



SINGLE WAY BIG OPEN 5-AXIS VISE FFAV-280

****The jaw plates can be customized.**



MODEL	A	B	C	D	E	F
FFAV-280	356	280	278	80	40	25
G	H	I	J	J1	K	Clamping Force
280	120	62	156	280	38	2,500kgf
Cross Weight	Optional Accessories : Pull Bolts x 4 PCS/Zero Point System					
57kgs	Standard Accessories : Ratchet handle x 1 PCS, Guide key x 2 PCS, M6 x 12L Screw x 2 PCS, Lock Block x 4 PCS					

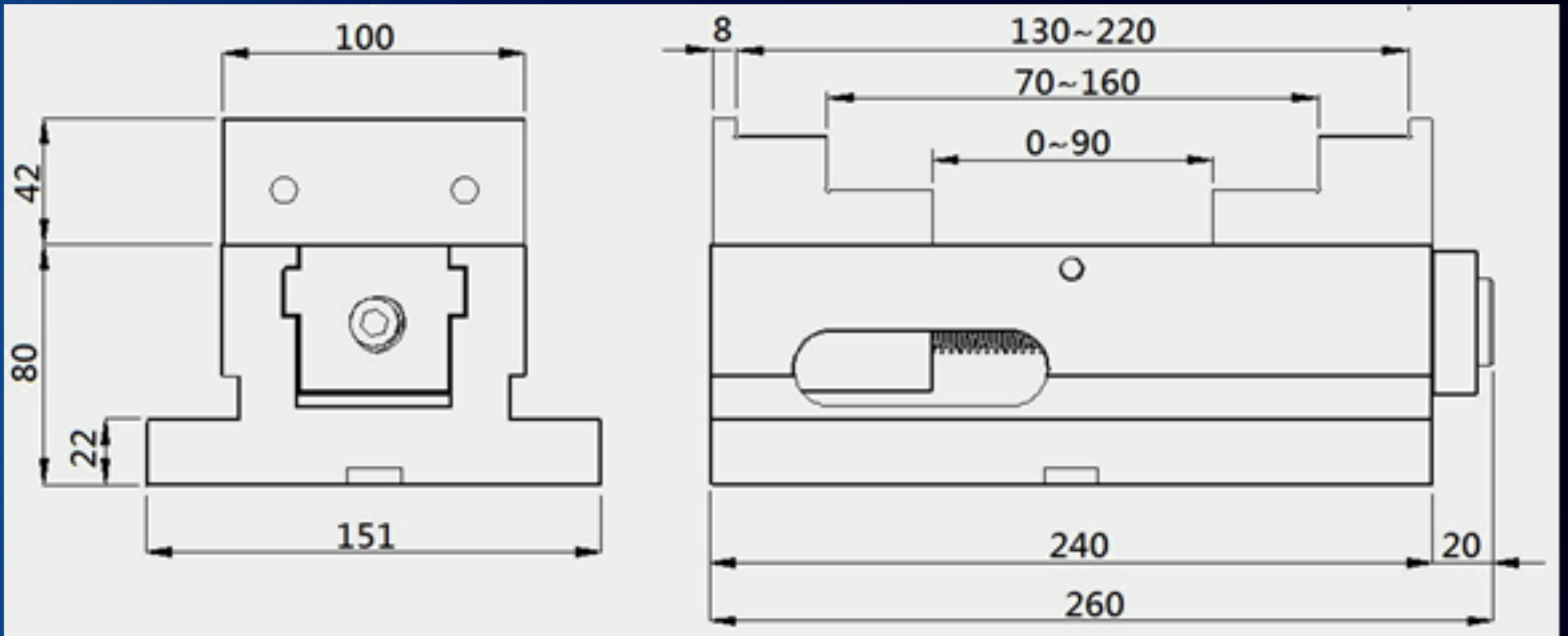
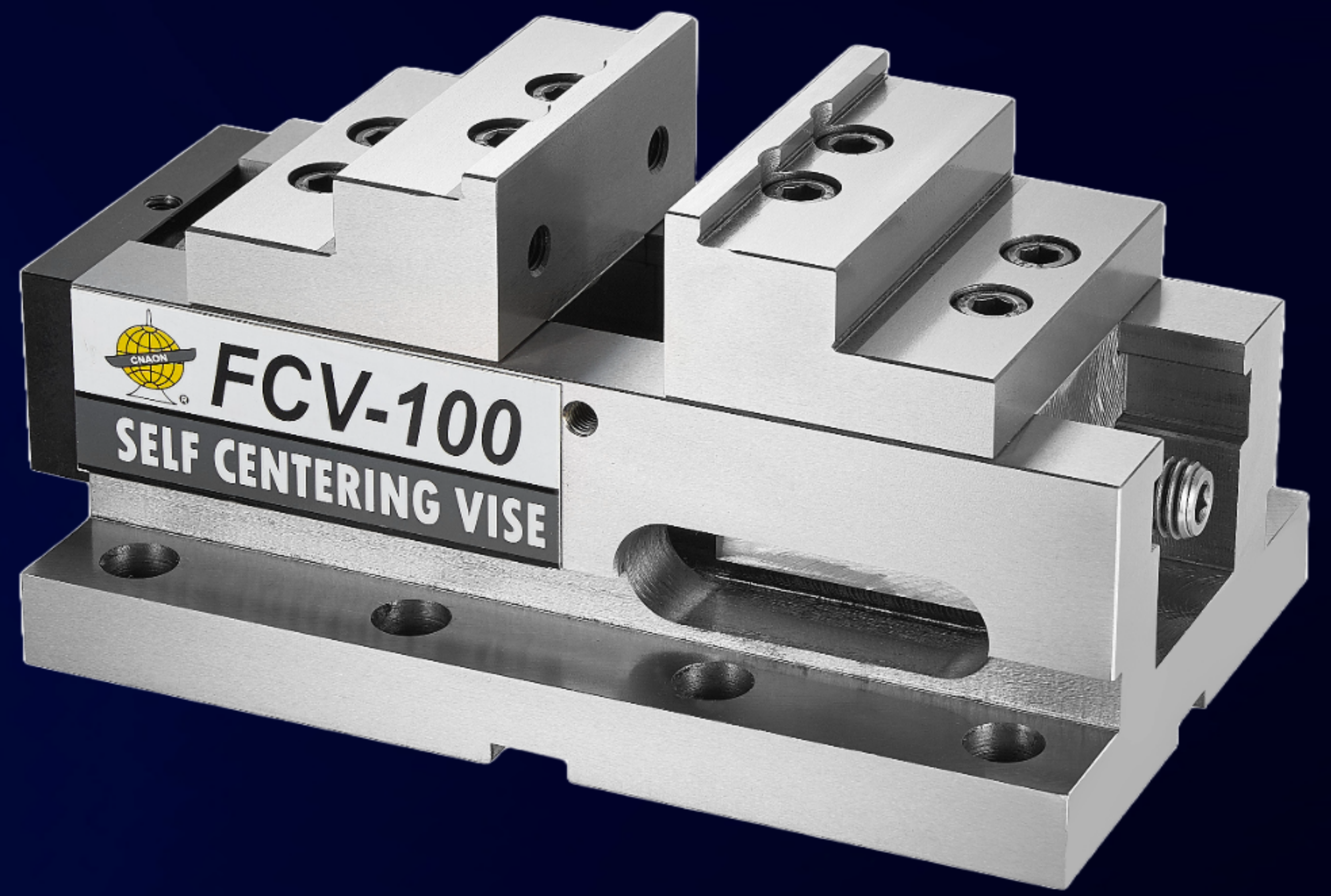
FEATURES

- Single Way 5-Axis Vise, with high repeat positioning accuracy (up to 0.015mm) which suitable for precision machining applications in precision 4 and 5-Axis CNC machine tools, rotary tables, or precision vertical/horizontal integrated milling and cutting machining centers.
- The screw rod undergoes quenching and high-frequency treatment, significantly improving the strength and wear resistance of the screw rod.
- The hardness of the jaw plate with heat treatment is HRC45° , capable of clamping high hardness materials below HRC40° .
- The sliding block is designed with additional hole positions, allowing for quick replacement or addition of required jaw plates, to meet various clamping requirements for different workpieces and make the workpiece clamping more diverse and flexible.
- This machine vise offers two different clamping modes (J~J1) for various machining methods and workpiece sizes, providing flexible clamping options.
- The height of the vise body has fixed specifications (D), allowing for simultaneous use of multiple units.



宇特精密

Self-Centering Vise FCV-100



Optional Accessories : Pull Bolts x 4 PCS/Zero Point System

**Standard Accessories : Ratchet handle x 1 PCS, Guide key x 2 PCS,
M6 x 12L Screw x 2 PCS, Lock Block x 4 PCS**

FEATURES

- The compact length is best suited for use with 5-axis machining centers.
- The sliding surface of the vise body undergoes hardening heat treatment (HRC50°) to ensure high precision, high wear resistance, and high tensile strength.
- The design of two-way self-centering enables precise positioning for machining.



www.ut-tech.com.tw

