



UT-TECH www.ut-tech.com.tw

Traditional Machine Vise

**2-WAY
MACHINE VISE
CU**



**3-WAY ANGLE
MILLING VISE
CY**

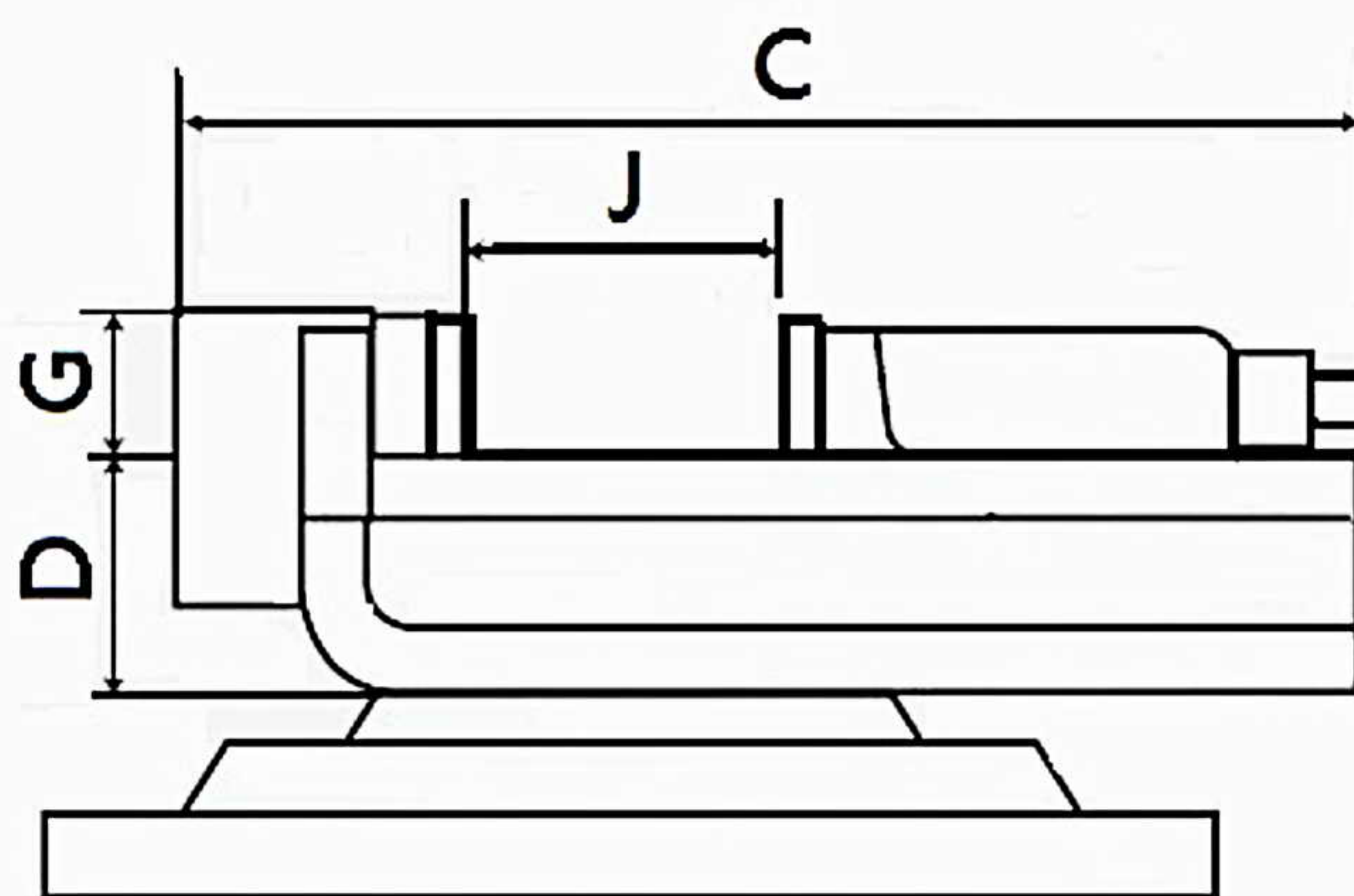
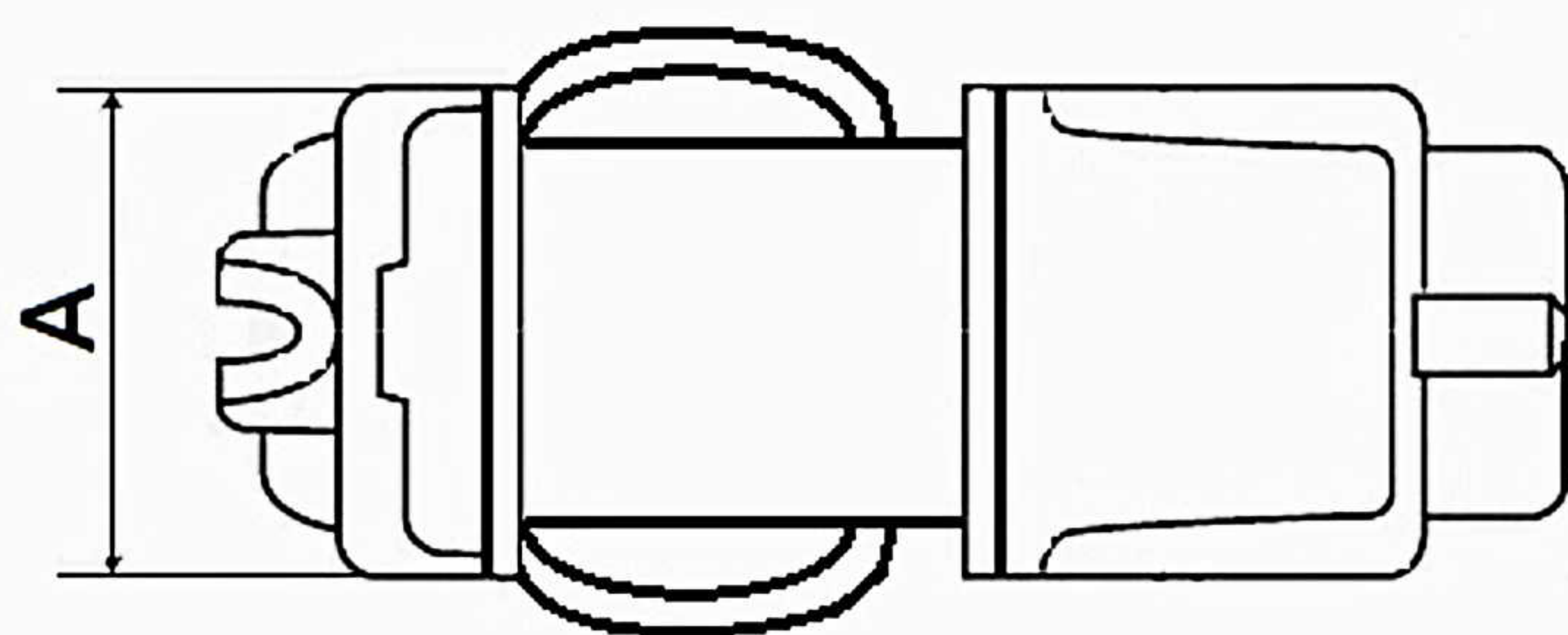




UT-TECH

www.ut-tech.com.tw

2-WAY MACHINE VISE CU



MODEL	A	C	D	G	J	Weight (Kg)
CU-6"	150	460	65	43	130	45

Standard Accessories : Handle x 1 set / Swivel base x 1set

- This machine vise can be adjusted to different angles according to requirements. It can rotate 360° horizontally and adjust vertically from 0° to 30° freely, with precise degree markings to ensure machining accuracy.
- Made of high-quality cast iron, the sliding surfaces of machine vise undergo harden treatment with a heat treatment hardness of HRC45° or higher, ensuring long-lasting wear resistance and precision.

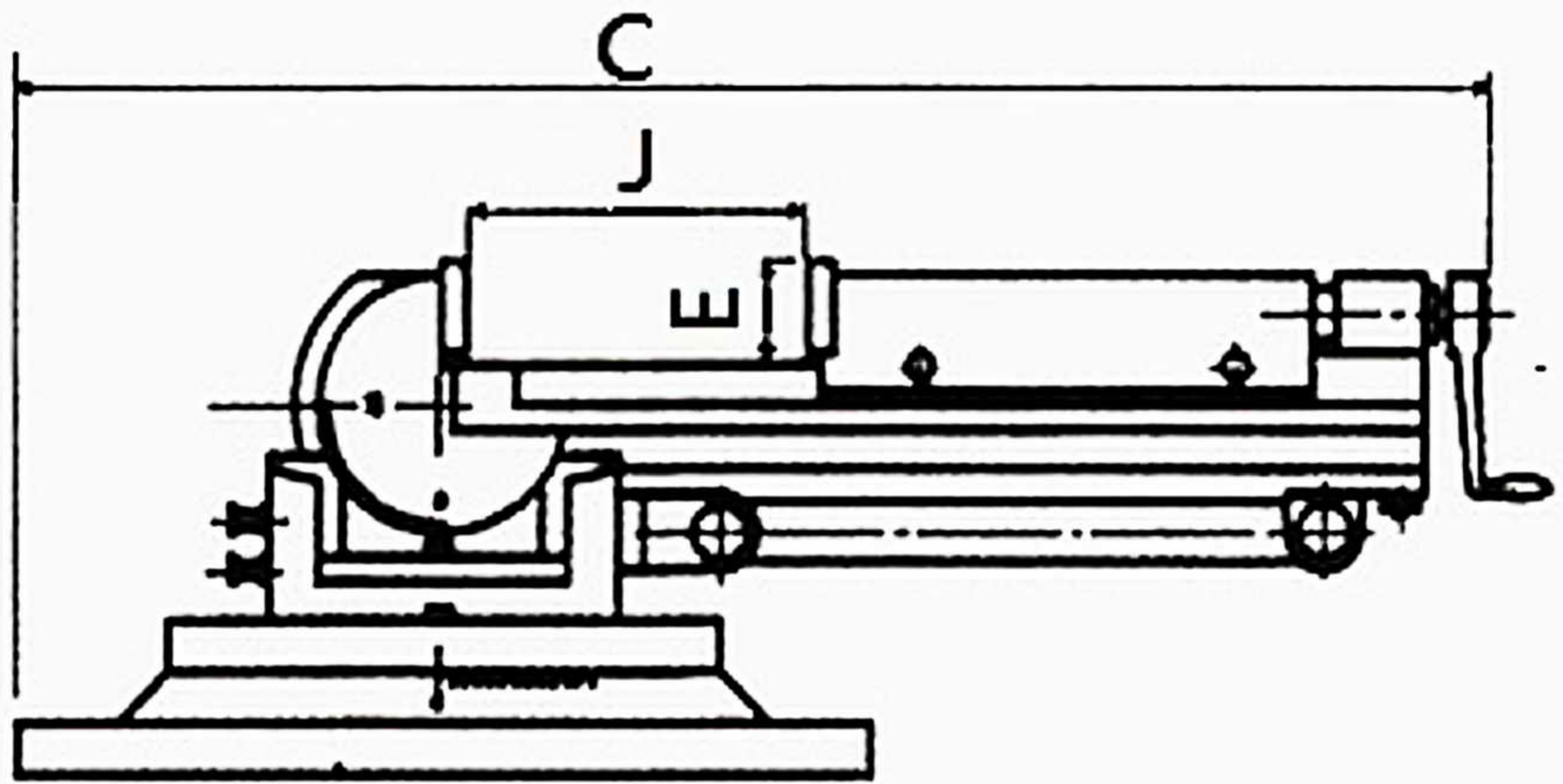
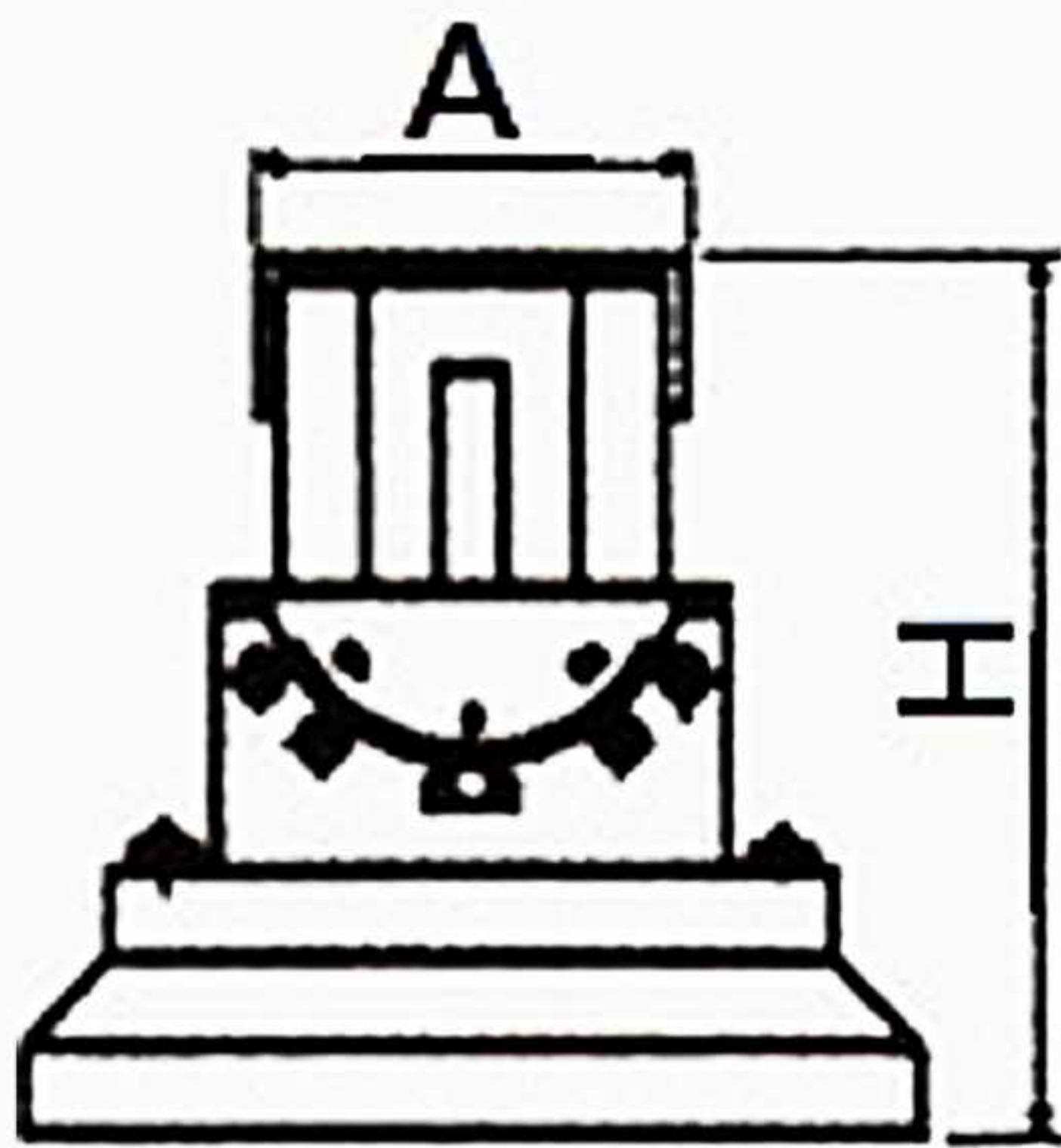




UT-TECH www.ut-tech.com.tw



3-WAY ANGLE MILLING VISE CY



MODEL	A	C	E	H	J	Vertical Height	Weight (Kg)
CY-3"	80	400	30	144	90	385	17
CY-4"	106	460	38	172	100	470	32
CY-5"	132	625	40	205	140	590	51

Standard Accessories : Handle x 1 set / Swivel base x 1set

- The angle can be set in three different directions: it can rotate 360° horizontally; the vertical angle can be adjusted from 0° to 90°, and the tilting angle can be rotated left or right by 45°. The degree markings are precise to ensure machining accuracy.
- Maintains the workpiece stable and smooth at any tilted angle.
- Auxiliary support bars provide additional stability during workpiece processing.

