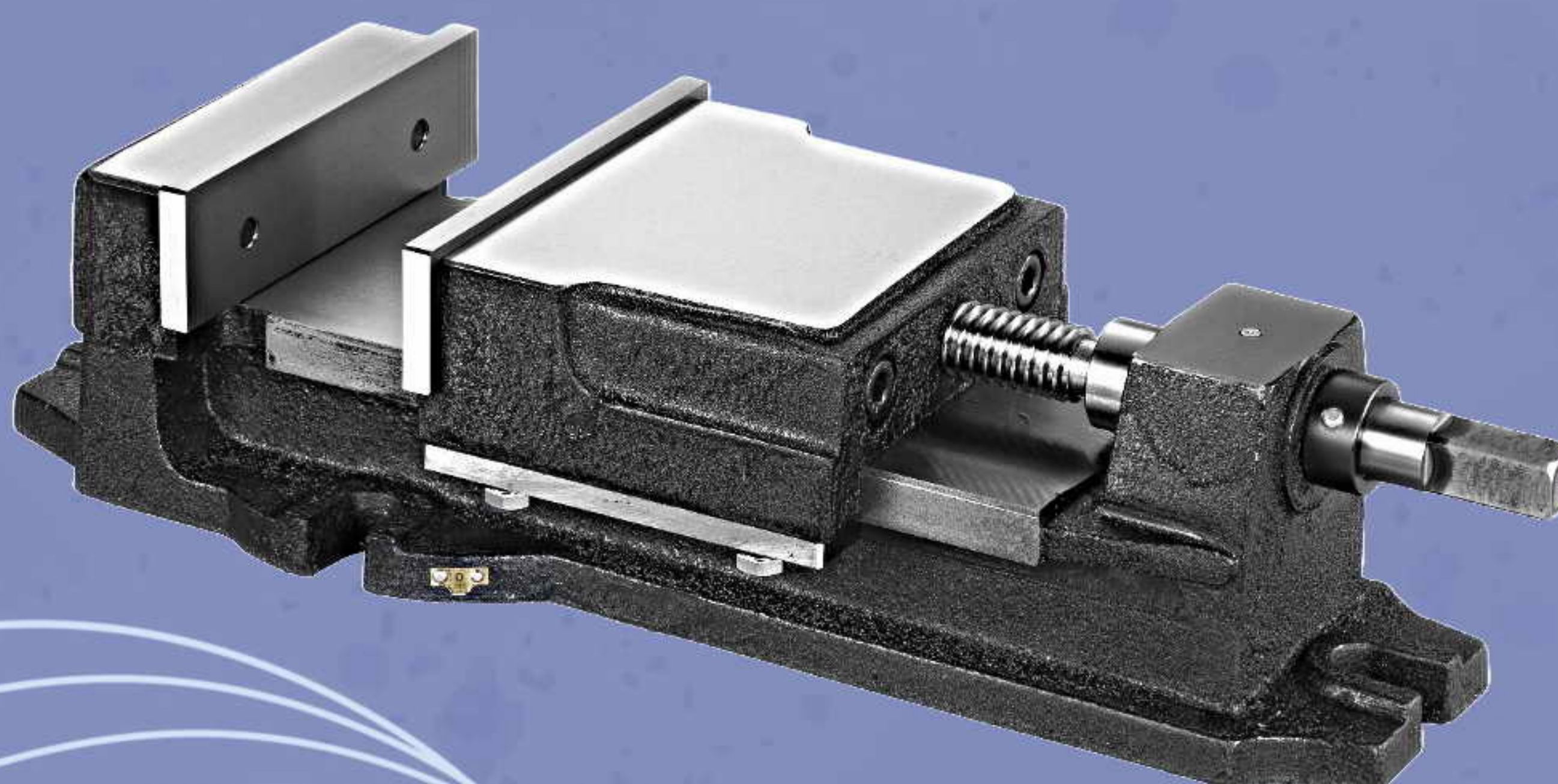




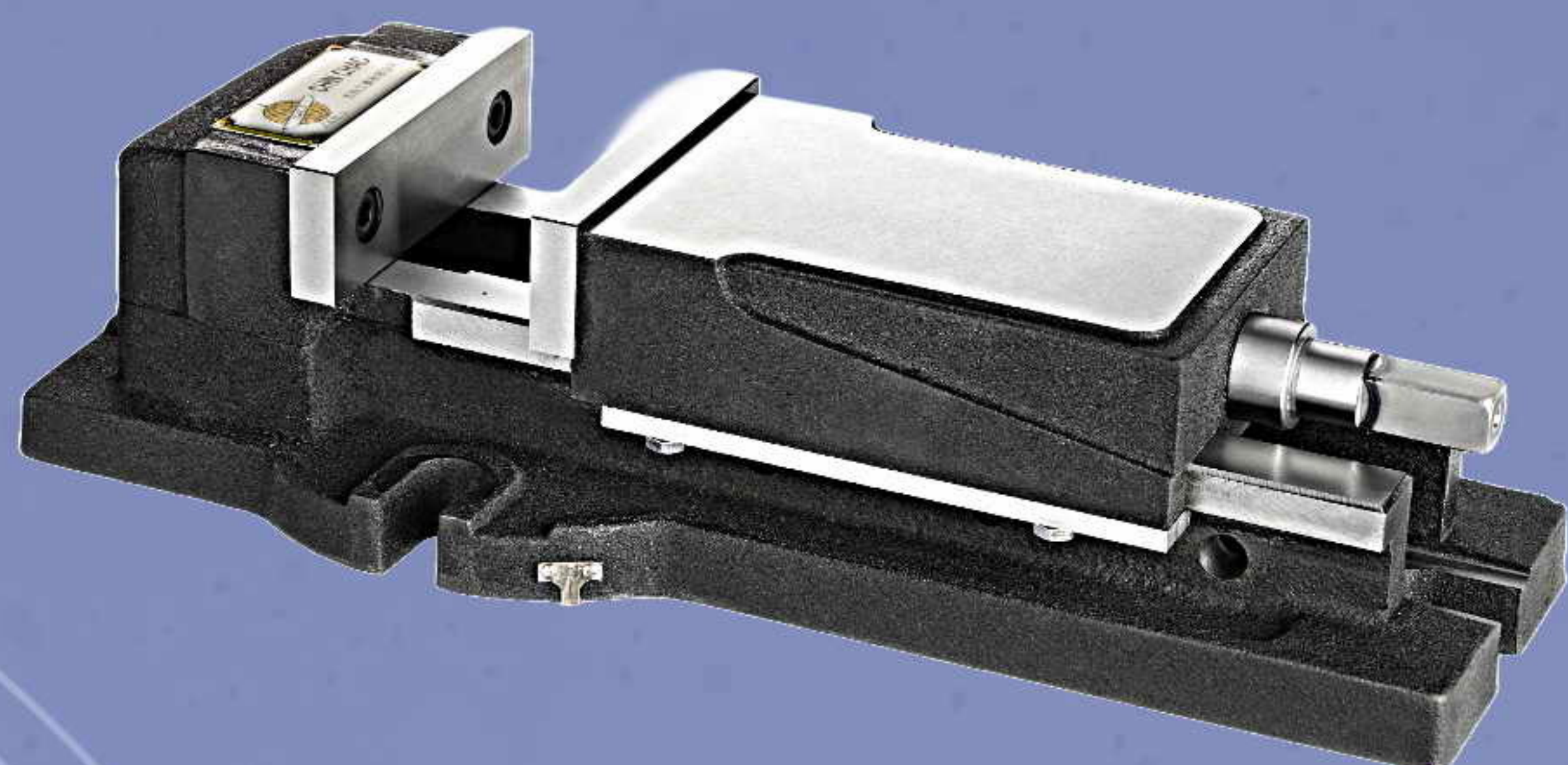
UT-TECH

www.ut-tech.com.tw

**K-TYPE
MILLING VISE
/ SKV - K**



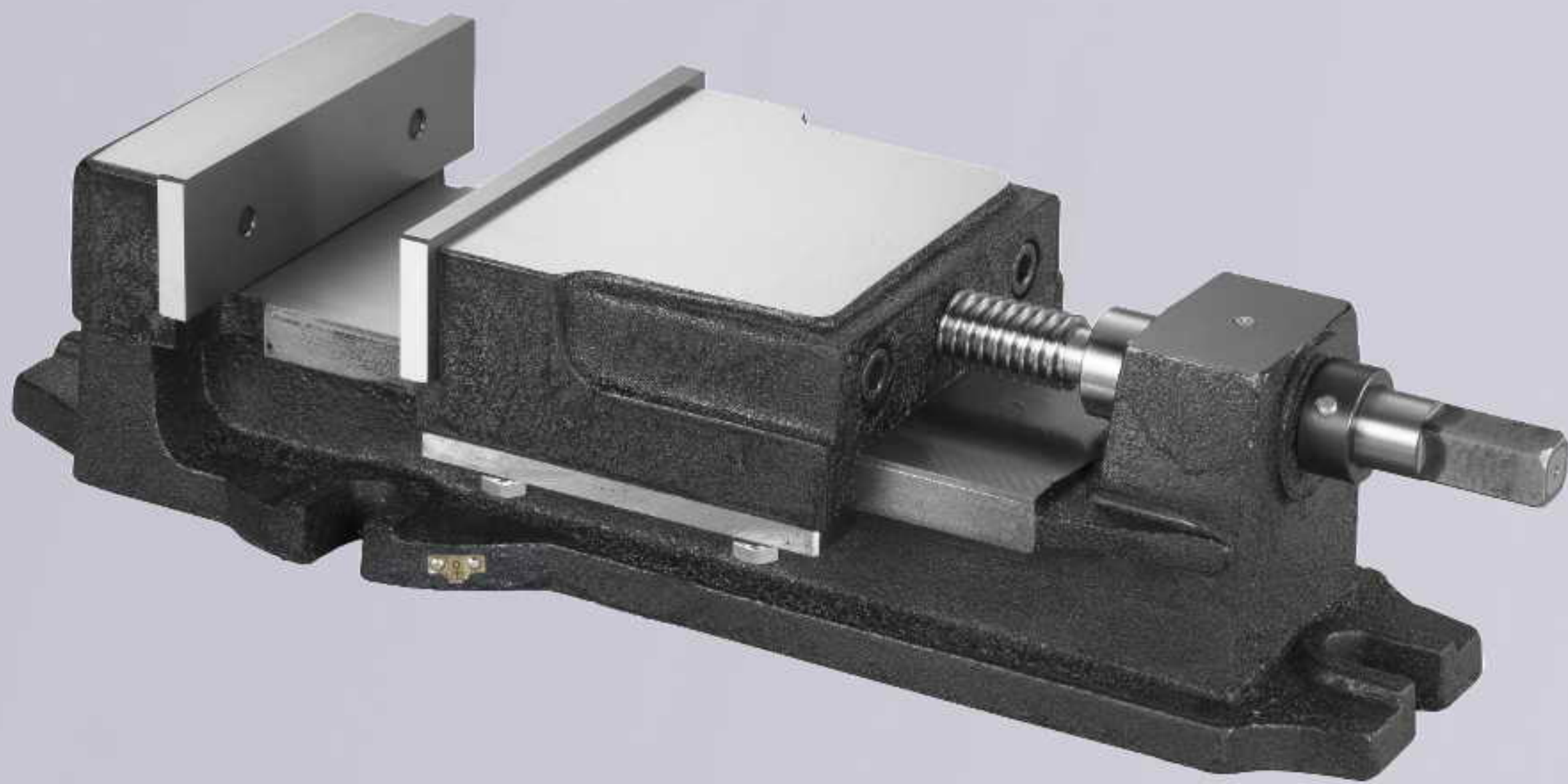
K-TYPE MACHINE VISE



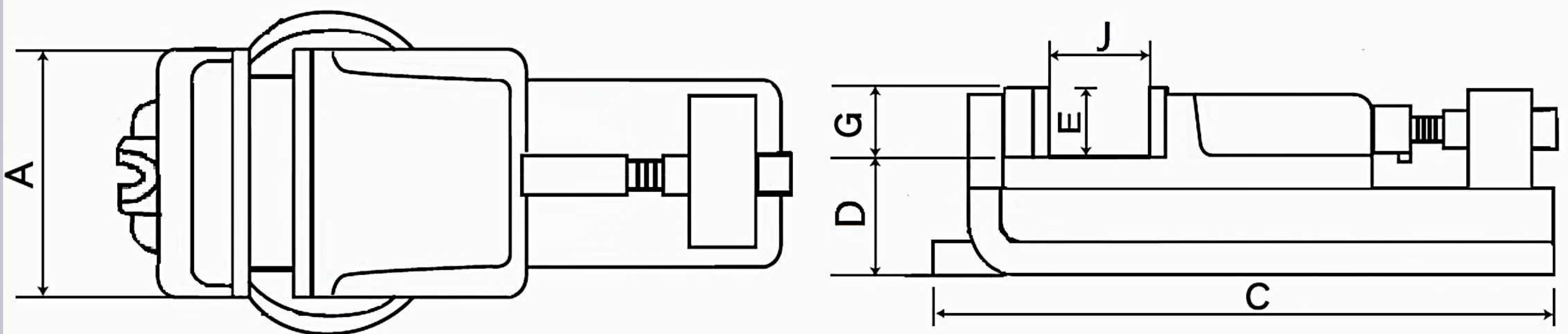
**K - TYPE
SUPER OPEN
MILLING VISE
/ J**



UT-TECH www.ut-tech.com.tw



K-TYPE MILLING VISE SKV-K



MODEL	A	C	D	E	G	J	Weight (Kg)
SKV-4"	97	294	48	34	32	60	10
SKV-5"	125	368	60	36	34	80	16
SKV-6"	150	460	65	43	43	110	27
SKV-8"	200	620	85	63	60	150	58

Note: If need swivel base, the model will be SKV-4-B, SKV-5-B, SKV-6-B, SKV-8-B

Standard Accessories : Handle x 1 set

Optional Accessories : Swivel base x 1set



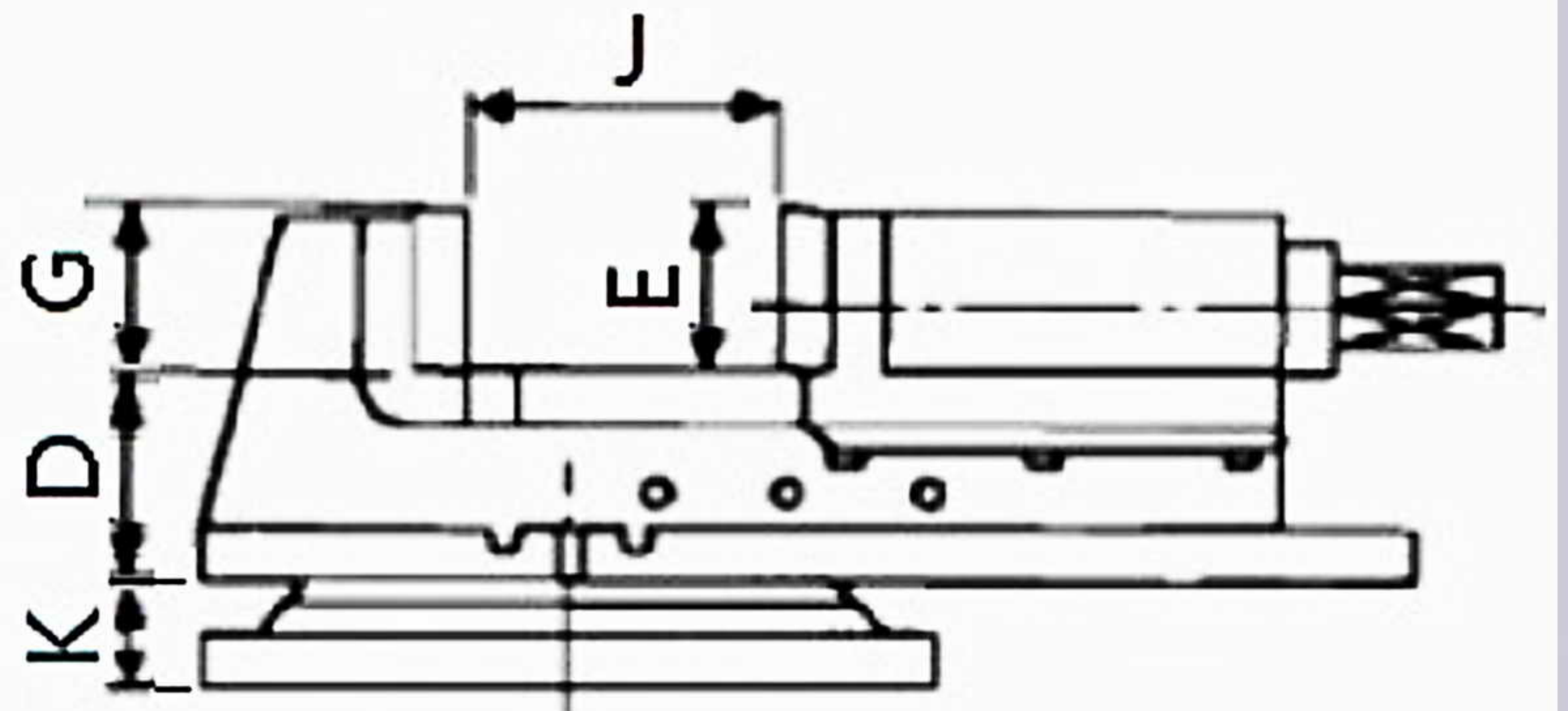
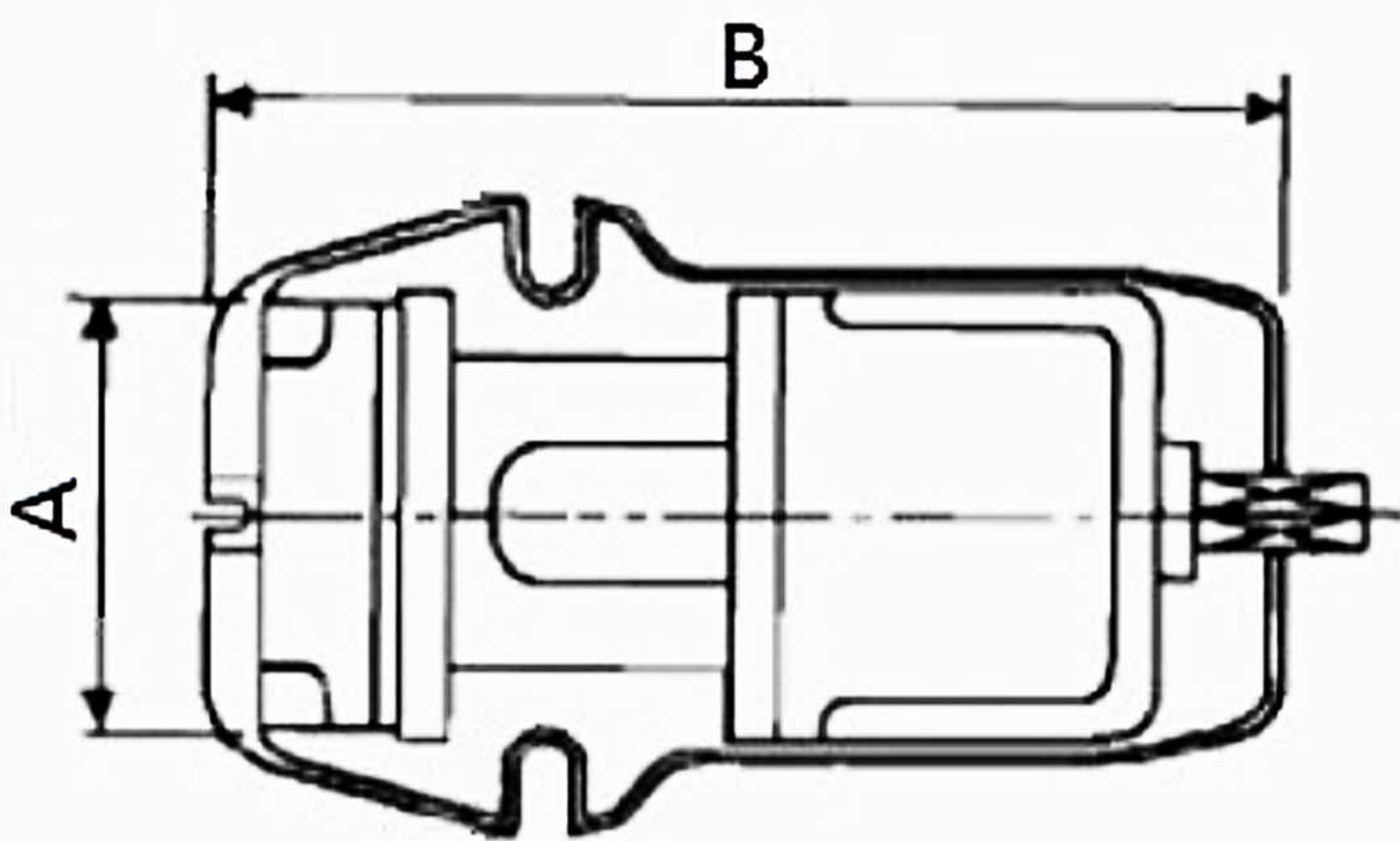
- Simple in structure, it belongs to the economical and durable type of machine vise.
- Made of high-quality cast iron, the sliding surfaces of machine vise undergo harden treatment with a heat treatment hardness of HRC45° or higher, ensuring long-lasting wear resistance and precision.



UT-TECH

www.ut-tech.com.tw

K - TYPE SUPER OPEN MILLING VISE J



MODEL	A	B	D	E	G	K	J	Weight (Kg)
J-400	110	390	58	38	37	41	180	21
J-500	130	450	66	49	48	42	230	32
J-600	152	540	77	54	54	42	300	45

Note: If need swivel base, the model will be J-400-B, J-500-B, J-600-B

Standard Accessories : Handle x 1 set

Optional Accessories : Swivel base x 1set



- This machine vise features a large opening for gripping, has a simple structure, and belongs to the economical and durable type of machine vise.
- Made of high-quality cast iron, the sliding surfaces of machine vise undergo harden treatment with a heat treatment hardness of HRC45° or higher, ensuring long-lasting wear resistance and precision.