



UT-TECH

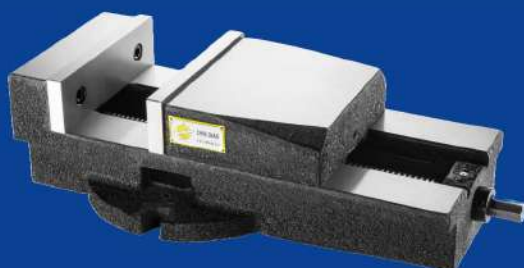
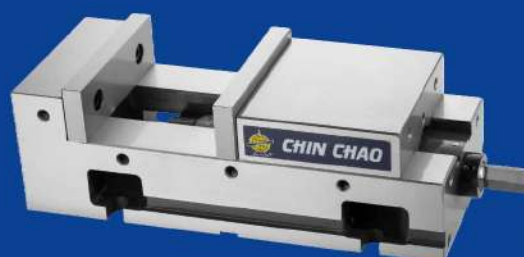
ANGLE LOCK MACHINE VISE

ANGLE LOCK
MACHINE VISE
/ SAV



ANGLE LOCK
MACHINE VISE
/ MC

PRECISION ANGLE
LOCK MACHINE
VISE / SMC-6

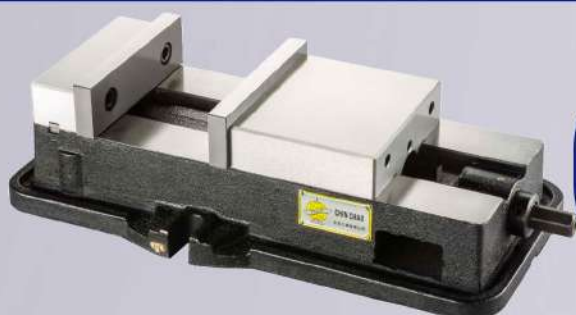


EXTENDED ANGLE
LOCK MACHINE
VISE / XL

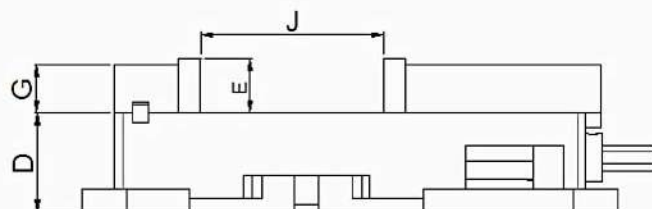
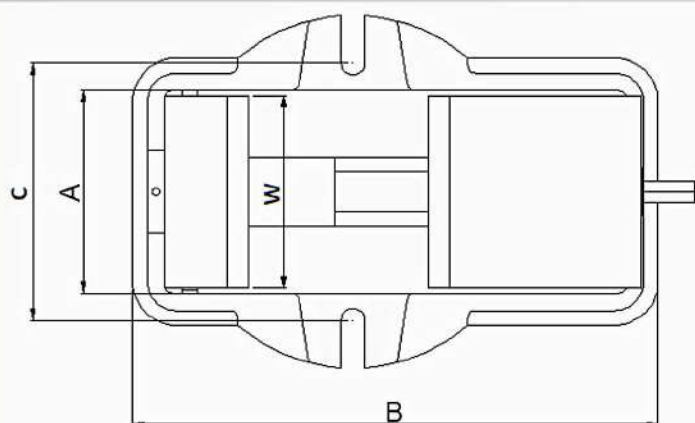
www.ut-tech.com.tw



UT-TECH www.ut-tech.com.tw

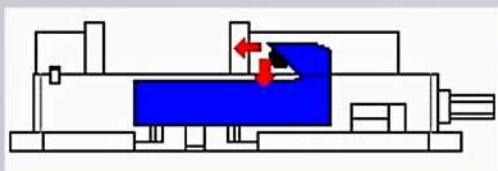


ANGLE LOCK MACHINE VISE SAV



MODEL	A	B	D	E	G	W	J	Clamping Force (MAX)	Weight (Kg)
SAV-4"	106	320	60	36	28	102	100	1,800kgf	15
SAV-5"	136	353	66	36	32	132	110	2,000kgf	23
SAV-6"	152	416	72	48	40	152	150	2,500kgf	31
SAV-6-1/2"	154	448	68	50	38	152	200	2,500kgf	33
SAV-8"	200	553	85	60	52	202	200	3,000kgf	59

Note: If need swivel base, the model will be SAV-4-B, SAV-5-B, SAV-6-B, SAV-6-1/2-B, SAV-8-B



Standard Accessories : Handle x 1 set

Optional Accessories : Swivel base x 1set

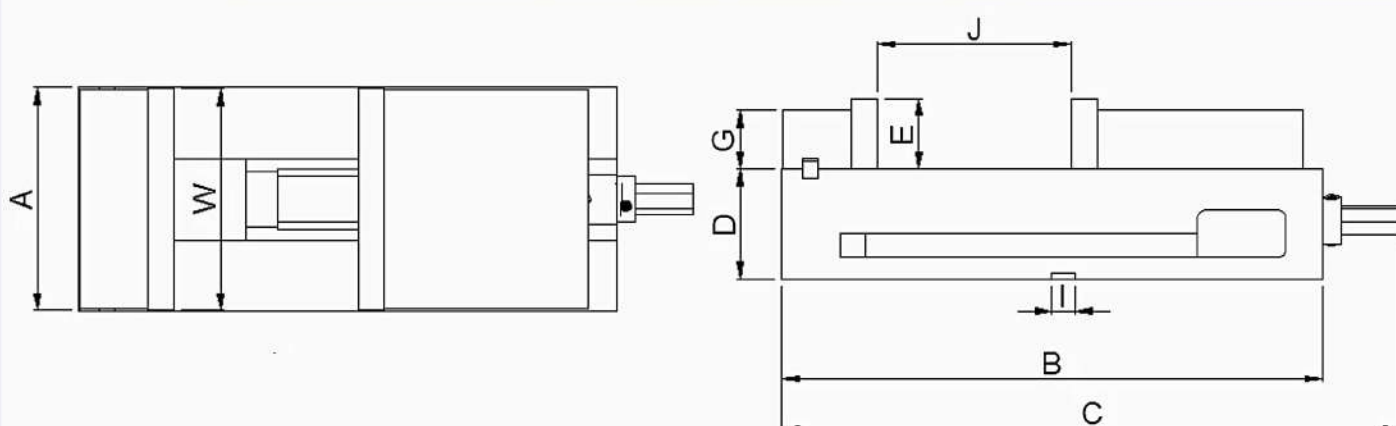


- Simple in structure, it belongs to the economical and durable type of machine vise.
- The semi-spherical ball can generate downward locking force, reducing the occurrence of workpiece floating.
- Made of high-quality cast iron, the sliding surfaces of machine vise undergo harden treatment with a heat treatment hardness of HRC45° or higher, ensuring long-lasting wear resistance and precision.



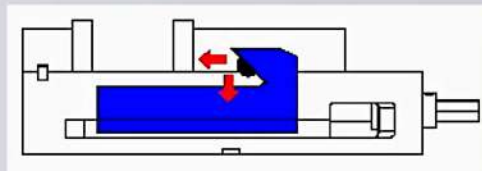
UT-TECH www.ut-tech.com.tw

ANGLE LOCK MACHINE VISE MC



MODEL	A	B	C	D	E	G	I	W	J	Clamping Force (MAX)	Weight (Kg)
MC-4"	106	280	324	58	36	28	16	102	100	1,800kgf	13
MC-5"	134	310	357	64	36	32	16	132	100	2,000kgf	19
MC-6"	153	368	424	75	48	40	16	152	150	2,500kgf	30
MC-8"	204	493	551	82	60	52	16	202	200	3,000kgf	62

Standard Accessories :
Handle x 1 set



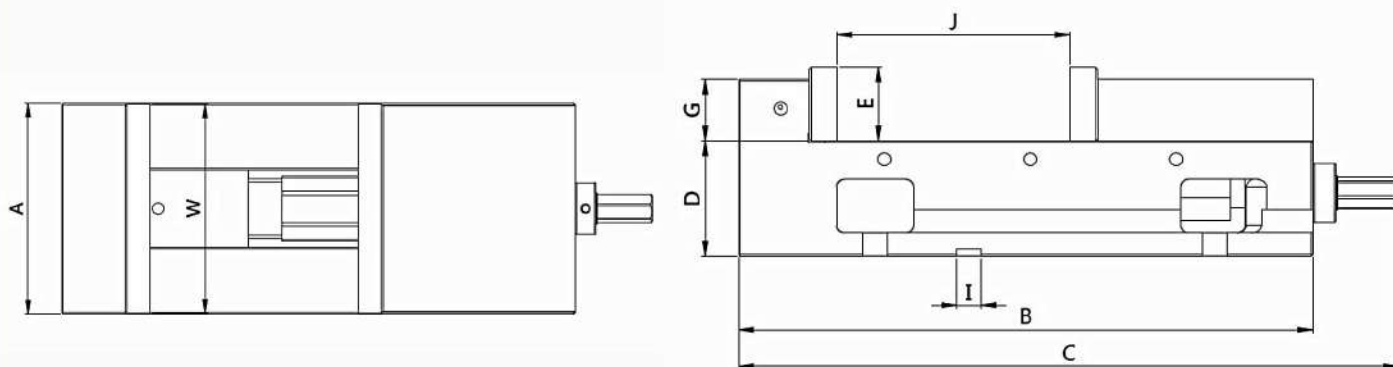
- This product has undergone six-sided grinding, ensuring high precision. It can be flat or sideways placement, offering better functionality compared to traditional angle lock vise.
- The semi-spherical ball can generate downward locking force, reducing the occurrence of workpiece floating.
- Made of high-quality cast iron, the sliding surfaces of machine vise undergo harden treatment with a heat treatment hardness of HRC45° or higher, ensuring long-lasting wear resistance and precision.



UT-TECH www.ut-tech.com.tw

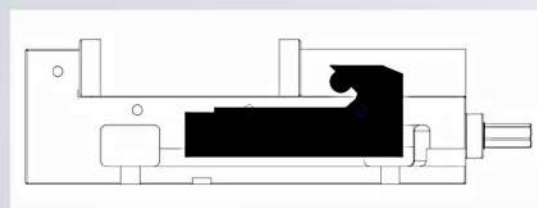


PRECISION ANGLE LOCK MACHINE VISE SMC-6



MODEL	A	B	C	D	E	G	I	J	W	Clamping Force (MAX)	Weight (Kg)
SMC-6"	153	374	430	75	48	40	16	152	152	2,500kgf	32

Standard Accessories :
Handle x 1 set

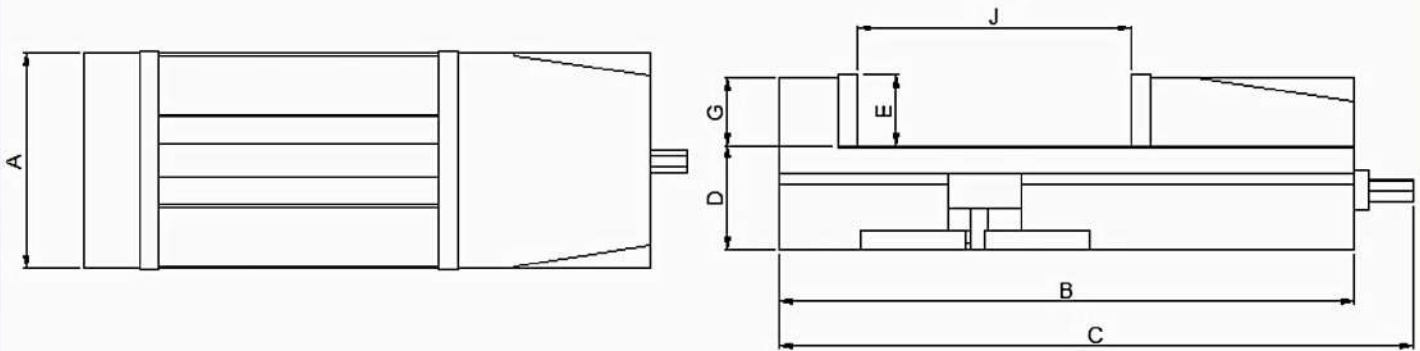
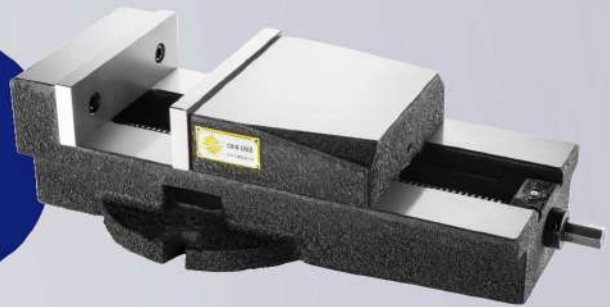


- This product has undergone six-sided grinding, ensuring high precision. It can be flat or sideways placement (usable in both vertical and horizontal positions), offering better functionality compared to traditional angle lock vise.
- The semi-spherical ball can generate downward locking force, reducing the occurrence of workpiece floating.
- Made of high-quality cast iron, the sliding surfaces of machine vise undergo harden treatment with a heat treatment hardness of HRC45° or higher, ensuring long-lasting wear resistance and precision.



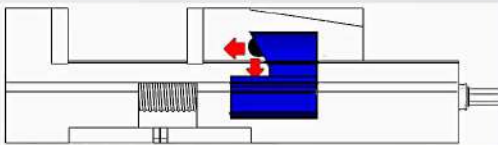
UT-TECH www.ut-tech.com.tw

EXTENDED ANGLE LOCK MACHINE VISE XL



MODEL	A	B	C	D	E	G	J	Weight (Kg)
XL-8"	200	510	560	92	63	60	260	72

Note: If need swivel base, the model will be XL-8-B



Standard Accessories : Handle x 1 set

Optional Accessories : Swivel base x 1set



- This machine vise features a large opening for clamping, and the vise body is processed in one-piece molding to reduce assembly tolerances and deformation. Additionally, the vise body structure is more robust.
- The semi-spherical ball can generate downward locking force, reducing the occurrence of workpiece floating. Simple in structure, it belongs to the economical and durable type of machine vise.
- Made of high-quality cast iron, the sliding surfaces of machine vise undergo harden treatment with a heat treatment hardness of HRC45° or higher, ensuring long-lasting wear resistance and precision.