

# HYDRAULIC MACHINE VISE

**HYDRAULIC MACHINE VISE -  
BUILT-IN TYPE / HP**



**MC HYDRAULIC ANGLE LOCK  
VISE - BUILT-IN TYPE / CMHA**



**HYDRAULIC MACHINE VISE -  
EXTERNAL TYPE / PHV**



**HYDRAULIC MACHINE VISE -  
TILTING TYPE / HPT**



## UT-TECH

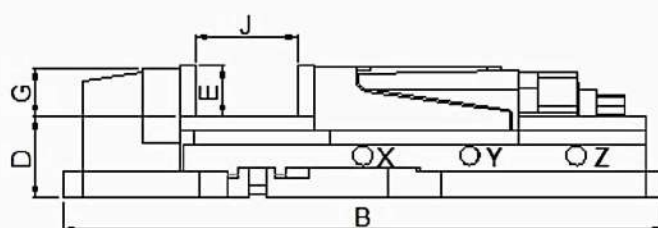
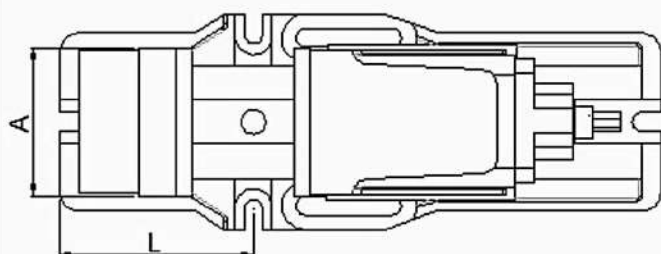
[www.ut-tech.com.tw](http://www.ut-tech.com.tw)



# UT-TECH [www.ut-tech.com.tw](http://www.ut-tech.com.tw)



## HYDRAULIC MACHINE VISE - BUILT-IN TYPE HP



MODEL	A	B	D	E	G	L	Opening Position J			Clamping Force ( kgf )	Weight ( Kg )
							X Position	Y Position	Z Position		
HP-4"	106	440	58	36	35	147	0-60	60-110	110-170	2500	22
HP-5"	132	550	70.5	48	49.5	195	0-70	70-140	140-220	3000	38
HP-6"	152	620	82.5	53	52.5	210	0-100	100-200	200-300	4500	53
HP-8"	200	680	96	63	60	260	0-100	100-200	200-300	6000	85

Note: If need swivel base, the model will be HP-4-B, HP-5-B, HP-6-B, HP-8-B

**Standard Accessories :**  
Handle x 1 pcs / Sleeve x 1 pcs /  
Connecting Rod x 1 pcs

**Optional Accessories : Swivel base x 1 set**

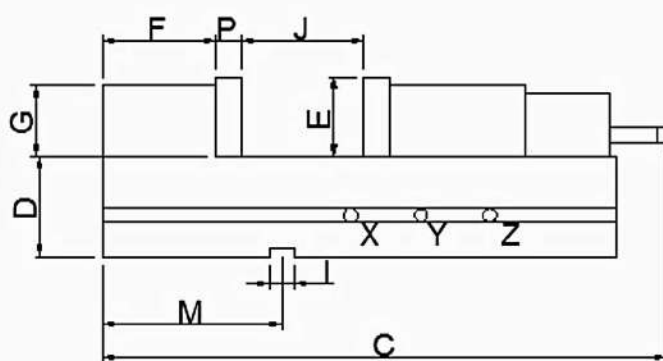
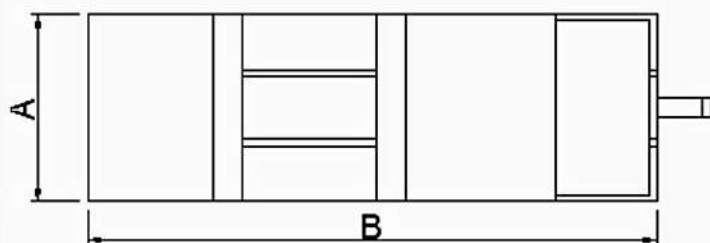


- New hydraulic cylinder with more stable clamping force, resistant to machine vibration, and featuring convenient disassembly and maintenance capabilities.
- Equipped with a large opening for clamping and quick movement forwards and backwards.
- This machine vise utilizes high-quality cast iron, and all sliding surfaces of the vise body are hardened, heat-treatment to HRC45° or higher, ensuring long-lasting wear resistance and precision.



# UT-TECH [www.ut-tech.com.tw](http://www.ut-tech.com.tw)

## MC HYDRAULIC ANGLE LOCK VISE - BUILT-IN TYPE CMHA



MODEL	A	B	C	D	E	F	G	I	M	P	Opening Position J			Clamping Force (kgf)	Weight (Kg)
											X Position	Y Position	Z Position		
CMHA-100	105	404	540	62	42	64.5	40	16	122	12.5	0-85	85-170		2500	22
CMHA-150	154	507	710	85	57	84.5	55	18	165	15.5	0-90	90-180	180-270	5000	50
CMHA-200	200	606	755	95	62	89.5	67	18	190	18.5	0-100	100-200	200-300	7000	80

### Standard Accessories : Handle x 1 pcs

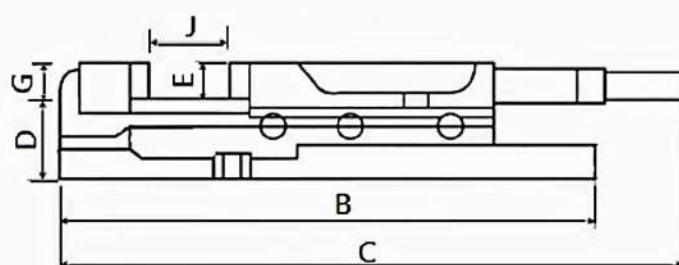
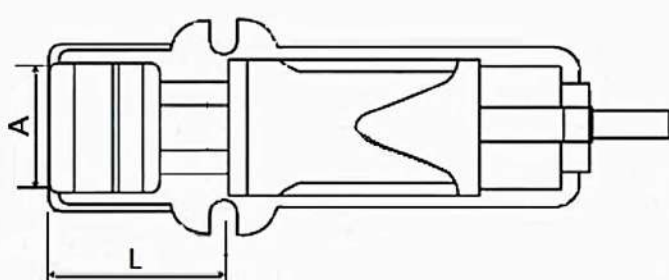
- This body of machine vise made of spherical graphite cast iron FCD600 material
- The semi-spherical ball can generate downward locking force, reducing the occurrence of workpiece floating.
- The machine vise can be placed sideways to use.
- The sliding surfaces of the vise are all subjected to hardened heat treatment to achieve HRC45°, ensuring durability and precision
- The sliding top cover of the vise is removable, making it convenient to remove iron chips from inside the vise.
- The height of vise body and groove of guide key are both made to fixed specifications, allowing multiple vises to be used together simultaneously.



# UT-TECH [www.ut-tech.com.tw](http://www.ut-tech.com.tw)



## HYDRAULIC MACHINE VISE - EXTERNAL TYPE PHV

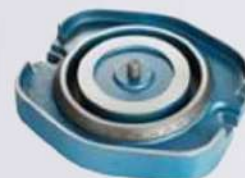


MODEL	A	B	C	D	E	G	L	J	Clamping Force (kgf)	Weight (Kg)
PHV-130	130	505	795	72	55	55	180	220	4000	38
PHV-160	160	605	935	82	58	58	195	310	5000	58
PHV-200	200	700	1035	100	63	63	265	310	6000	95

Note: If need swivel base, the model will be PHV-130-B, PHV-160-B, PHV-200-B

**Standard Accessories : Handle x 1 pcs**

**Optional Accessories : Swivel base x 1 set**

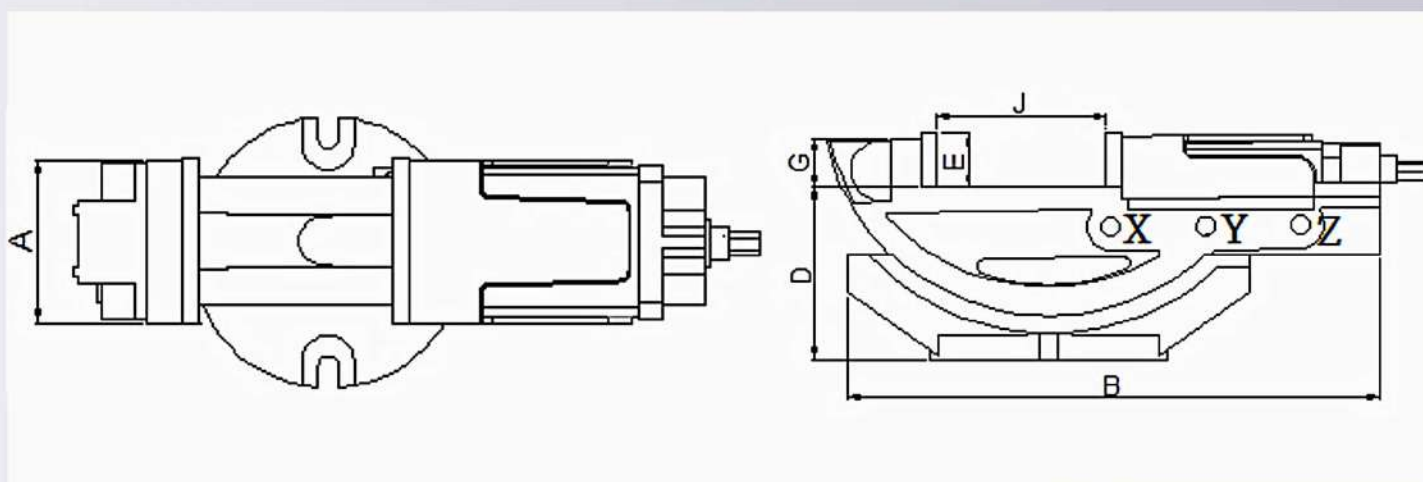


- Mechanical type / Hydraulic type can be used independently or in combination. Hydraulic clamping provides strong and stable force, suitable for heavy cutting and precision machining.
- Features a large opening for clamping and can move quickly back and forth.
- Made of high-quality cast iron, the sliding surfaces of machine vise undergo harden treatment, achieving a heat treatment of HRC45° or higher, ensuring long-lasting durability and precision.



# UT-TECH [www.ut-tech.com.tw](http://www.ut-tech.com.tw)

## HYDRAULIC MACHINE VISE - TILTING TYPE HPT

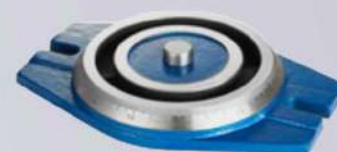


MODEL	A	B	D	E	G	Opening Position J			Clamping Force ( kgf )	Weight ( Kg )
						X Position	Y Position	Z Position		
HPT-4"	105	395	163	36	34	0-60	60-110	110-170	3500	26
HPT-6"	150	560	250	53	52	0-100	100-200	200-300	4500	71

Note: If need swivel base, the model will be HPT-4-B、HPT-6-B

**Standard Accessories :**  
Handle x 1 pcs / Sleeve x 1 pcs /  
Connecting Rod x 1 pcs

**Optional Accessories : Swivel base x 1 set**



- This machine vise can be adjusted to different angles according to various needs. The vertical adjustment angle can be freely adjusted from 0° to 45° with precise degree markings, ensuring machining accuracy.
- New hydraulic cylinder with more stable clamping force, resistant to machine vibration, and featuring convenient disassembly and maintenance capabilities, belongs to the economical and durable type.
- Made of high-quality cast iron, and the sliding surfaces of the machine vise undergo harden treatment with a heat treatment of HRC45° or higher, ensuring long-lasting wear resistance and precision.